

# BRAP Antibody

Purified Mouse Monoclonal Antibody (Mab)

Catalog # AP52816

## Product Information

---

Application	WB
Primary Accession	<a href="#">Q7Z569</a>
Reactivity	Human
Host	Mouse
Clonality	Monoclonal
Isotype	IgG1
Calculated MW	67305

## Additional Information

---

Gene ID	8315
Other Names	3010002G07Rik;BRAP2;BRCA1 associated protein;EC 6.3.2.;Galectin 2 binding protein;IMP; Impedes mitogenic signal propagation;Renal carcinoma antigen NY REN 63; RING finger protein 52;RNF52;zgc:92894.
Dilution	WB~~1:1000
Format	Purified mouse monoclonal antibody in PBS(pH 7.4) containing with 0.09% (W/V) sodium azide and 50% glycerol.
Storage	Store at -20 °C.Stable for 12 months from date of receipt

## Protein Information

---

Name	BRAP ( <a href="#">HGNC:1099</a> )
Synonyms	RNF52
Function	Negatively regulates MAP kinase activation by limiting the formation of Raf/MEK complexes probably by inactivation of the KSR1 scaffold protein. Also acts as a Ras responsive E3 ubiquitin ligase that, on activation of Ras, is modified by auto-polyubiquitination resulting in the release of inhibition of Raf/MEK complex formation. May also act as a cytoplasmic retention protein with a role in regulating nuclear transport.
Cellular Location	Cytoplasm.
Tissue Location	Expressed in breast epithelial cell lines.

## Background

---

Negatively regulates MAP kinase activation by limiting the formation of Raf/MEK complexes probably by inactivation of the KSR1 scaffold protein. Also acts as a Ras responsive E3 ubiquitin ligase that, on activation of Ras, is modified by auto- polyubiquitination resulting in the release of inhibition of Raf/MEK complex formation. May also act as a cytoplasmic retention protein with a role in regulating nuclear transport.

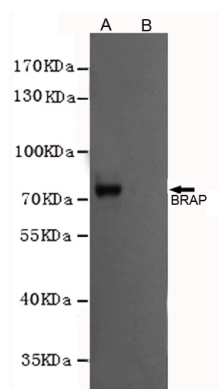
## References

---

Li S.,et al.J. Biol. Chem. 273:6183-6189(1998).  
Matheny S.A.,et al.Nature 427:256-260(2004).  
Ota T.,et al.Nat. Genet. 36:40-45(2004).  
Scherer S.E.,et al.Nature 440:346-351(2006).  
Mural R.J.,et al.Submitted (JUL-2005) to the EMBL/GenBank/DDBJ databases.

## Images

---



Western blot analysis of extracts from CHO-K1 cells, transfected with a human pFLAG-CMV2-BRAP construct (A) or transfected with a human pFLAG-CMV2 construct (B), using BRAP mouse mAb (1:1000 diluted).

Please note: All products are 'FOR RESEARCH USE ONLY. NOT FOR USE IN DIAGNOSTIC OR THERAPEUTIC PROCEDURES'.