

TMM79 Antibody (C-term)

Affinity Purified Rabbit Polyclonal Antibody (Pab)

Catalog # AP5286b

Product Information

Application	WB, E
Primary Accession	Q9BSE2
Other Accession	Q5E9U3
Reactivity	Human
Predicted	Bovine
Host	Rabbit
Clonality	Polyclonal
Isotype	Rabbit IgG
Clone Names	RB26498
Calculated MW	43520
Antigen Region	362-391

Additional Information

Gene ID	84283
Other Names	Transmembrane protein 79, Mattrin, TMEM79, MATT
Target/Specificity	This TMM79 antibody is generated from rabbits immunized with a KLH conjugated synthetic peptide between 362-391 amino acids from the C-terminal region of human TMM79.
Dilution	WB~~1:1000 E~~Use at an assay dependent concentration.
Format	Purified polyclonal antibody supplied in PBS with 0.09% (W/V) sodium azide. This antibody is purified through a protein A column, followed by peptide affinity purification.
Storage	Maintain refrigerated at 2-8°C for up to 2 weeks. For long term storage store at -20°C in small aliquots to prevent freeze-thaw cycles.
Precautions	TMM79 Antibody (C-term) is for research use only and not for use in diagnostic or therapeutic procedures.

Protein Information

Name	TMEM79
Synonyms	MATT
Function	Contributes to the epidermal integrity and skin barrier function. Plays a role

in the lamellar granule (LG) secretory system and in the stratum corneum (SC) epithelial cell formation (By similarity).

Cellular Location

Lysosome. Golgi apparatus, trans- Golgi network. Membrane; Multi-pass membrane protein. Note=Colocalized with TGOLN2 in the trans-Golgi network. Colocalized with LAMP1 in the lysosome (By similarity).

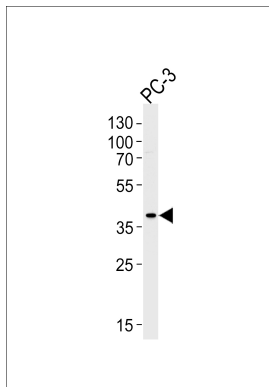
Tissue Location

Expressed in the epidermis of the skin. Expressed in epithelial cells of the outermost layer of the stratum granulosum (SG) and hair follicles (at protein level)

References

Olsen, J.V., et al. Cell 127(3):635-648(2006)

Images



Western blot analysis of lysate from PC-3 cell line, using TMM79 Antibody (C-term)(Cat. #AP5286b). AP5286b was diluted at 1:1000 at each lane. A goat anti-rabbit IgG H&L(HRP) at 1:5000 dilution was used as the secondary antibody. Lysate at 35ug per lane.

Please note: All products are 'FOR RESEARCH USE ONLY. NOT FOR USE IN DIAGNOSTIC OR THERAPEUTIC PROCEDURES'.