

TBKB1 Antibody (N-term)

Affinity Purified Rabbit Polyclonal Antibody (Pab)

Catalog # AP5320a

Product Information

Application	WB, E
Primary Accession	A7MCY6
Other Accession	Q6DG50 , A2A9T0 , NP_055541.1
Reactivity	Human, Mouse
Predicted	Rat
Host	Rabbit
Clonality	Polyclonal
Isotype	Rabbit IgG
Clone Names	RB26411
Calculated MW	67702
Antigen Region	42-70

Additional Information

Gene ID	9755
Other Names	TANK-binding kinase 1-binding protein 1, TBK1-binding protein 1, TBKBP1 {ECO:0000312 EMBL:AAI114191}
Target/Specificity	This TBKB1 antibody is generated from rabbits immunized with a KLH conjugated synthetic peptide between 42-70 amino acids from the N-terminal region of human TBKB1.
Dilution	WB~~1:1000 E~~Use at an assay dependent concentration.
Format	Purified polyclonal antibody supplied in PBS with 0.09% (W/V) sodium azide. This antibody is purified through a protein A column, followed by peptide affinity purification.
Storage	Maintain refrigerated at 2-8°C for up to 2 weeks. For long term storage store at -20°C in small aliquots to prevent freeze-thaw cycles.
Precautions	TBKB1 Antibody (N-term) is for research use only and not for use in diagnostic or therapeutic procedures.

Protein Information

Name	TBKBP1 {ECO:0000312 EMBL:AAI11419.1}
Function	Adapter protein which constitutively binds TBK1 and IKKε playing a role in antiviral innate immunity.

Tissue Location

Detected in leukocytes, lung, placenta, small intestine, liver, kidney, spleen, muscle, heart, brain and at low levels in thymus.

Background

TBKBP1 is an adaptor protein that binds to TBK1 (MIM 604834) and is part of the interaction network in the TNF (MIM 191160)/NFKB (see MIM 164011) pathway

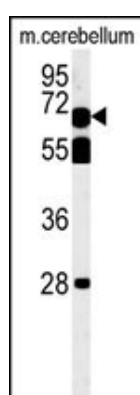
References

Ryzhakov, G., et al. EMBO J. 26(13):3180-3190(2007)

Kim, J.M., et al. DNA Res. 13(6):275-286(2006)

Bouwmeester, T., et al. Nat. Cell Biol. 6(2):97-105(2004)

Images



TBKB1 Antibody (N-term) (Cat. #AP5320a) western blot analysis in mouse cerebellum tissue lysates (35ug/lane). This demonstrates the TBKB1 antibody detected TBKB1 protein (arrow).

Please note: All products are 'FOR RESEARCH USE ONLY. NOT FOR USE IN DIAGNOSTIC OR THERAPEUTIC PROCEDURES'.