

STAMBPL1 Antibody (Center)

Affinity Purified Rabbit Polyclonal Antibody (Pab)

Catalog # AP5326C

Product Information

Application	WB, IHC-P, FC, E
Primary Accession	Q96FJ0
Other Accession	NP_065850.1
Reactivity	Human, Mouse
Host	Rabbit
Clonality	Polyclonal
Isotype	Rabbit IgG
Clone Names	RB26763
Calculated MW	49783
Antigen Region	135-163

Additional Information

Gene ID	57559
Other Names	AMSH-like protease, AMSH-LP, 3419-, STAM-binding protein-like 1, STAMBPL1, AMSHLP, KIAA1373
Target/Specificity	This STAMBPL1 antibody is generated from rabbits immunized with a KLH conjugated synthetic peptide between 135-163 amino acids from the Central region of human STAMBPL1.
Dilution	WB~~1:1000 IHC-P~~1:100~500 FC~~1:10~50 E~~Use at an assay dependent concentration.
Format	Purified polyclonal antibody supplied in PBS with 0.09% (W/V) sodium azide. This antibody is purified through a protein A column, followed by peptide affinity purification.
Storage	Maintain refrigerated at 2-8°C for up to 2 weeks. For long term storage store at -20°C in small aliquots to prevent freeze-thaw cycles.
Precautions	STAMBPL1 Antibody (Center) is for research use only and not for use in diagnostic or therapeutic procedures.

Protein Information

Name	STAMBPL1 {ECO:0000303 PubMed:35114100, ECO:0000312 HGNC:HGNC:24105}
Function	Zinc metalloprotease that specifically cleaves 'Lys-63'- linked polyubiquitin

chains (PubMed:[18758443](#), PubMed:[35114100](#)). Acts as a positive regulator of the TORC1 signaling pathway by mediating 'Lys- 63'-linked deubiquitination of SESN2, thereby inhibiting SESN2- interaction with the GATOR2 complex (PubMed:[35114100](#)). Does not cleave 'Lys-48'-linked polyubiquitin chains (PubMed:[18758443](#)).

Tissue Location

Ubiquitously expressed.

Background

STAMBPL1 is zinc metalloprotease that specifically cleaves 'Lys-63'-linked polyubiquitin chains. Does not cleave 'Lys-48'-linked polyubiquitin chains.

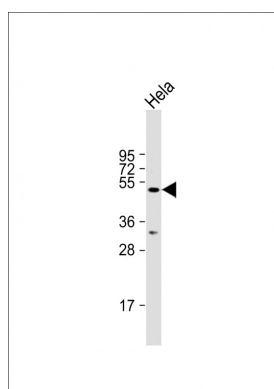
References

Reyes-Ibarra, A.P., et al. Mol. Endocrinol. 21(6):1394-1407(2007)

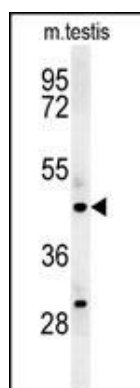
Sugiyama, N., et al. Mol. Cell Proteomics 6(6):1103-1109(2007)

Nakamura, M., et al. Genes Cells 11(6):593-606(2006)

Images

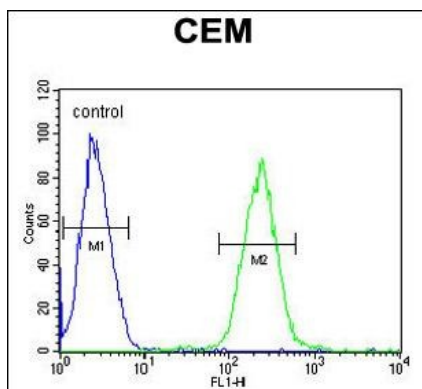
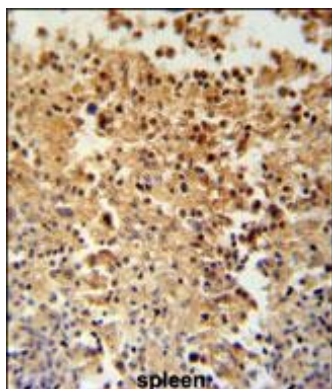


Anti-STAMBPL1 Antibody (Center) at 1:1000 dilution + HeLa whole cell lysate Lysates/proteins at 20 µg per lane. Secondary Goat Anti-Rabbit IgG, (H+L), Peroxidase conjugated at 1/10000 dilution. Predicted band size : 50 kDa Blocking/Dilution buffer: 5% NFDM/TBST.



STAMBPL1 Antibody (Center)(Cat. #AP5326c) western blot analysis in mouse testis tissue lysates (35ug/lane).This demonstrates the STAMBPL1 antibody detected STAMBPL1 protein (arrow).

STAMBPL1 Antibody (Center) (Cat. #AP5326c) immunohistochemistry analysis in formalin fixed and paraffin embedded human spleen tissue followed by peroxidase conjugation of the secondary antibody and DAB staining. This data demonstrates the use of the STAMBPL1 Antibody (Center) for immunohistochemistry. Clinical relevance has not been evaluated.



STAMBPL1 Antibody (Center) (Cat. #AP5326c) flow cytometric analysis of CEM cells (right histogram) compared to a negative control cell (left histogram). FITC-conjugated goat-anti-rabbit secondary antibodies were used for the analysis.

Please note: All products are 'FOR RESEARCH USE ONLY. NOT FOR USE IN DIAGNOSTIC OR THERAPEUTIC PROCEDURES'.