

CD3e Antibody

Purified Rabbit Polyclonal Antibody (Pab)

Catalog # AP53293

Product Information

Application	WB
Primary Accession	P07766
Reactivity	Human, Mouse
Host	Rabbit
Clonality	Polyclonal
Calculated MW	23147

Additional Information

Gene ID	916
Other Names	T-cell surface glycoprotein CD3 epsilon chain, T-cell surface antigen T3/Leu-4 epsilon chain, CD3e, CD3E, T3E
Target/Specificity	KLH-conjugated synthetic peptide encompassing a sequence within the center region of human CD3e. The exact sequence is proprietary.
Dilution	WB~~ 1:1000
Format	Rabbit IgG in phosphate buffered saline , pH 7.4, 150mM NaCl, 0.09% (W/V) sodium azide and 50% glycerol
Storage	Store at -20 °C.Stable for 12 months from date of receipt

Protein Information

Name	CD3E
Synonyms	T3E
Function	<p>Part of the TCR-CD3 complex present on T-lymphocyte cell surface that plays an essential role in adaptive immune response. When antigen presenting cells (APCs) activate T-cell receptor (TCR), TCR- mediated signals are transmitted across the cell membrane by the CD3 chains CD3D, CD3E, CD3G and CD3Z. All CD3 chains contain immunoreceptor tyrosine-based activation motifs (ITAMs) in their cytoplasmic domain. Upon TCR engagement, these motifs become phosphorylated by Src family protein tyrosine kinases LCK and FYN, resulting in the activation of downstream signaling pathways (PubMed:2470098). In addition of this role of signal transduction in T-cell activation, CD3E plays an essential role in correct T-cell development. Initiates the TCR-CD3 complex assembly by forming the two heterodimers CD3D/CD3E and CD3G/CD3E. Also participates in internalization and cell surface down- regulation of TCR-CD3</p>

complexes via endocytosis sequences present in CD3E cytosolic region (PubMed:[10384095](#), PubMed:[26507128](#)). In addition to its role as a TCR coreceptor, it serves as a receptor for ITPRIPL1. Ligand recognition inhibits T-cell activation by promoting interaction with NCK1, which prevents CD3E-ZAP70 interaction and blocks the ERK- NFkB signaling cascade and calcium influx (PubMed:[38614099](#)).

Cellular Location

Cell membrane; Single-pass type I membrane protein

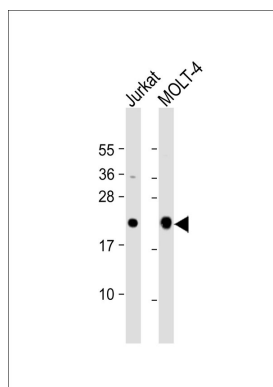
Background

The CD3 complex mediates signal transduction.

References

Gold D.P.,et al.Nature 321:431-434(1986).
Terhorst C.,et al.Submitted (JAN-1987) to the EMBL/GenBank/DDBJ databases.
Clevers H.C.,et al.Proc. Natl. Acad. Sci. U.S.A. 85:8156-8160(1988).
Ota T.,et al.Nat. Genet. 36:40-45(2004).
Mural R.J.,et al.Submitted (JUL-2005) to the EMBL/GenBank/DDBJ databases.

Images



All lanes : Anti-CD3e Antibody at 1:1000 dilution Lane 1: Jurkat whole cell lysate Lane 2: MOLT-4 whole cell lysate Lysates/proteins at 20 µg per lane. Secondary Goat Anti-Rabbit IgG, (H+L), Peroxidase conjugated at 1/10000 dilution. Predicted band size : 23 kDa Blocking/Dilution buffer: 5% NFDM/TBST.

Please note: All products are 'FOR RESEARCH USE ONLY. NOT FOR USE IN DIAGNOSTIC OR THERAPEUTIC PROCEDURES'.