

MRPL41 Antibody

Purified Rabbit Polyclonal Antibody (Pab)

Catalog # AP53306

Product Information

Application	WB
Primary Accession	Q8IXM3
Reactivity	Human
Host	Rabbit
Clonality	Polyclonal
Calculated MW	15383

Additional Information

Gene ID	64975
Other Names	39S ribosomal protein L41, mitochondrial, L41mt, MRP-L41, 39S ribosomal protein L27 homolog, Bcl-2-interacting mitochondrial ribosomal protein L41, Cell proliferation-inducing gene 3 protein, MRP-L27 homolog, MRPL41, BMRP, MRPL27, RPML27
Dilution	WB~~ 1:1000
Format	Rabbit IgG in phosphate buffered saline , pH 7.4, 150mM NaCl, 0.09% (W/V) sodium azide and 50% glycerol
Storage	Store at -20 °C.Stable for 12 months from date of receipt

Protein Information

Name	MRPL41
Synonyms	BMRP, MRPL27, RPML27
Function	Component of the mitochondrial ribosome large subunit (PubMed: 25278503 , PubMed: 25838379 , PubMed: 28892042 , PubMed: 35177605). Also involved in apoptosis and cell cycle (PubMed: 16024796 , PubMed: 16256947). Enhances p53/TP53 stability, thereby contributing to p53/TP53-induced apoptosis in response to growth-inhibitory condition. Enhances p53/TP53 translocation to the mitochondria. Has the ability to arrest the cell cycle at the G1 phase, possibly by stabilizing the CDKN1A and CDKN1B (p27Kip1) proteins (PubMed: 16024796).
Cellular Location	Mitochondrion
Tissue Location	Present in kidney, liver, thymus and testis, and at lower level in brain and spleen (at protein level)

Background

Component of the mitochondrial ribosome large subunit. Also involved in apoptosis and cell cycle. Enhances p53/TP53 stability, thereby contributing to p53/TP53-induced apoptosis in response to growth-inhibitory condition. Enhances p53/TP53 translocation to the mitochondria. Has the ability to arrest the cell cycle at the G1 phase, possibly by stabilizing the CDKN1A and CDKN1B (p27Kip1) proteins.

References

Kim J.W.,et al.Submitted (FEB-2003) to the EMBL/GenBank/DDBJ databases.

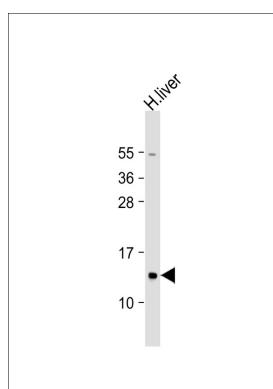
Humphray S.J.,et al.Nature 429:369-374(2004).

Kenmochi N.,et al.Genomics 77:65-70(2001).

Koc E.C.,et al.J. Biol. Chem. 276:43958-43969(2001).

Chintharlapalli S.R.,et al.J. Cell. Biochem. 94:611-626(2005).

Images



Anti-MRPL41 Antibody at 1:1000 dilution + human liver lysate Lysates/proteins at 20 µg per lane. Secondary Goat Anti-Rabbit IgG, (H+L), Peroxidase conjugated at 1/10000 dilution. Predicted band size : 15 kDa Blocking/Dilution buffer: 5% NFDM/TBST.

Please note: All products are 'FOR RESEARCH USE ONLY. NOT FOR USE IN DIAGNOSTIC OR THERAPEUTIC PROCEDURES'.