

PP15 Antibody

Purified Rabbit Polyclonal Antibody (Pab)

Catalog # AP53312

Product Information

Application	WB
Primary Accession	P61970
Reactivity	Human, Mouse
Host	Rabbit
Clonality	Polyclonal
Calculated MW	14478

Additional Information

Gene ID	10204
Other Names	Nuclear transport factor 2, NTF-2, Placental protein 15, PP15, NUTF2, NTF2
Target/Specificity	KLH-conjugated synthetic peptide encompassing a sequence within the center region of human PP15. The exact sequence is proprietary.
Dilution	WB~~ 1:1000
Format	Rabbit IgG in phosphate buffered saline , pH 7.4, 150mM NaCl, 0.09% (W/V) sodium azide and 50% glycerol
Storage	Store at -20 °C.Stable for 12 months from date of receipt

Protein Information

Name	NUTF2 (HGNC:13722)
Function	Mediates the import of GDP-bound RAN from the cytoplasm into the nucleus which is essential for the function of RAN in cargo receptor-mediated nucleocytoplasmic transport. Thereby, plays indirectly a more general role in cargo receptor-mediated nucleocytoplasmic transport. Interacts with GDP-bound RAN in the cytosol, recruits it to the nuclear pore complex via its interaction with nucleoporins and promotes its nuclear import.
Cellular Location	Cytoplasm, cytosol. Nucleus outer membrane {ECO:0000250 UniProtKB:P61972}. Nucleus, nuclear pore complex {ECO:0000250 UniProtKB:P61972}. Nucleus inner membrane {ECO:0000250 UniProtKB:P61972}. Nucleus, nucleoplasm. Note=At steady state it is essentially nucleoplasmic, enriched in nucleoplasmic foci

Background

Facilitates protein transport into the nucleus. Interacts with the nucleoporin p62 and with Ran. Acts at a relatively late stage of nuclear protein import, subsequent to the initial docking of nuclear import ligand at the nuclear envelope. Could be part of a multicomponent system of cytosolic factors that assemble at the pore complex during nuclear import.

References

Grundmann U.,et al.Nucleic Acids Res. 16:4721-4721(1988).

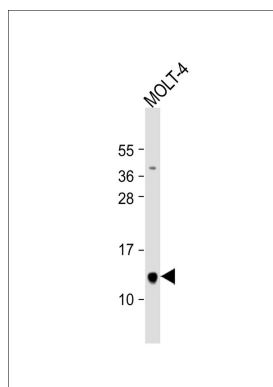
Paschal B.M.,et al.J. Cell Biol. 129:925-937(1995).

Ebert L.,et al.Submitted (JUN-2004) to the EMBL/GenBank/DDBJ databases.

Ota T.,et al.Nat. Genet. 36:40-45(2004).

Mural R.J.,et al.Submitted (JUL-2005) to the EMBL/GenBank/DDBJ databases.

Images



Anti-PP15 Antibody at 1:1000 dilution + MOLT-4 whole cell lysate Lysates/proteins at 20 µg per lane. Secondary Goat Anti-Rabbit IgG, (H+L), Peroxidase conjugated at 1/10000 dilution. Predicted band size : 14 kDa
Blocking/Dilution buffer: 5% NFDM/TBST.

Please note: All products are 'FOR RESEARCH USE ONLY. NOT FOR USE IN DIAGNOSTIC OR THERAPEUTIC PROCEDURES'.