

NXPH3 Antibody

Purified Rabbit Polyclonal Antibody (Pab)

Catalog # AP53313

Product Information

Application	WB
Primary Accession	O95157
Reactivity	Human, Mouse
Host	Rabbit
Clonality	Polyclonal
Calculated MW	28127

Additional Information

Gene ID	11248
Other Names	Neurexophilin-3, NXPH3, KIAA1159, NPH3
Target/Specificity	KLH-conjugated synthetic peptide encompassing a sequence within the center region of human NXPH3. The exact sequence is proprietary.
Dilution	WB~~ 1:1000
Format	Rabbit IgG in phosphate buffered saline , pH 7.4, 150mM NaCl, 0.09% (W/V) sodium azide and 50% glycerol
Storage	Store at -20 °C.Stable for 12 months from date of receipt

Protein Information

Name	NXPH3
Synonyms	KIAA1159, NPH3
Function	May be signaling molecules that resemble neuropeptides. Ligand for alpha-neurexins (By similarity).
Cellular Location	Secreted.
Tissue Location	Highest level in brain.

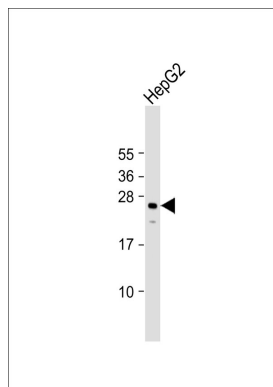
Background

May be signaling molecules that resemble neuropeptides. Ligand for alpha-neurexins (By similarity).

References

Clark H.F.,et al.Genome Res. 13:2265-2270(2003).
Bechtel S.,et al.BMC Genomics 8:399-399(2007).
Mural R.J.,et al.Submitted (SEP-2005) to the EMBL/GenBank/DDBJ databases.
Hirosawa M.,et al.DNA Res. 6:329-336(1999).
Missler M.,et al.J. Neurosci. 18:3630-3638(1998).

Images



Anti-NXPH3 Antibody at 1:1000 dilution + HepG2 whole cell lysate Lysates/proteins at 20 µg per lane. Secondary Goat Anti-Rabbit IgG, (H+L), Peroxidase conjugated at 1/10000 dilution. Predicted band size : 28 kDa
Blocking/Dilution buffer: 5% NFDm/TBST.

Please note: All products are 'FOR RESEARCH USE ONLY. NOT FOR USE IN DIAGNOSTIC OR THERAPEUTIC PROCEDURES'.