

RPS12 Antibody

Purified Rabbit Polyclonal Antibody (Pab)

Catalog # AP53319

Product Information

Application	WB
Primary Accession	P25398
Reactivity	Human, Mouse
Host	Rabbit
Clonality	Polyclonal
Calculated MW	14515

Additional Information

Gene ID	6206
Other Names	40S ribosomal protein S12, RPS12
Target/Specificity	KLH-conjugated synthetic peptide encompassing a sequence within the C-term region of human RPS12. The exact sequence is proprietary.
Dilution	WB~~ 1:1000
Format	Rabbit IgG in phosphate buffered saline , pH 7.4, 150mM NaCl, 0.09% (W/V) sodium azide and 50% glycerol
Storage	Store at -20 °C.Stable for 12 months from date of receipt

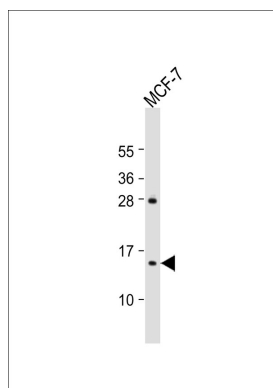
Protein Information

Name	RPS12 (HGNC:10385)
Function	Part of the small subunit (SSU) processome, first precursor of the small eukaryotic ribosomal subunit. During the assembly of the SSU processome in the nucleolus, many ribosome biogenesis factors, an RNA chaperone and ribosomal proteins associate with the nascent pre- rRNA and work in concert to generate RNA folding, modifications, rearrangements and cleavage as well as targeted degradation of pre- ribosomal RNA by the RNA exosome (PubMed: 34516797). Subunit of the 40S ribosomal complex (By similarity).
Cellular Location	Cytoplasm. Nucleus, nucleolus

References

Herauld Y.,et al.Nucleic Acids Res. 19:4001-4001(1991).
Yoshihama M.,et al.Genome Res. 12:379-390(2002).
Ota T.,et al.Nat. Genet. 36:40-45(2004).
Mungall A.J.,et al.Nature 425:805-811(2003).
Mural R.J.,et al.Submitted (SEP-2005) to the EMBL/GenBank/DDBJ databases.

Images



Anti-RPS12 Antibody at 1:1000 dilution + MCF-7 whole cell lysate Lysates/proteins at 20 µg per lane. Secondary Goat Anti-Rabbit IgG, (H+L), Peroxidase conjugated at 1/10000 dilution. Predicted band size : 15 kDa Blocking/Dilution buffer: 5% NFDM/TBST.

Please note: All products are 'FOR RESEARCH USE ONLY. NOT FOR USE IN DIAGNOSTIC OR THERAPEUTIC PROCEDURES'.