

XPLN Antibody

Purified Rabbit Polyclonal Antibody (Pab)

Catalog # AP53330

Product Information

Application	WB
Primary Accession	Q9NR81
Reactivity	Human
Host	Rabbit
Clonality	Polyclonal
Calculated MW	59783

Additional Information

Gene ID	50650
Other Names	Rho guanine nucleotide exchange factor 3, Exchange factor found in platelets and leukemic and neuronal tissues, XPLN, ARHGEF3
Target/Specificity	KLH-conjugated synthetic peptide encompassing a sequence within the C-term region of human XPLN. The exact sequence is proprietary.
Dilution	WB~~ 1:1000
Format	Rabbit IgG in phosphate buffered saline , pH 7.4, 150mM NaCl, 0.09% (W/V) sodium azide and 50% glycerol
Storage	Store at -20 °C.Stable for 12 months from date of receipt

Protein Information

Name	ARHGEF3
Function	Acts as a guanine nucleotide exchange factor (GEF) for RhoA and RhoB GTPases.
Cellular Location	Cytoplasm.
Tissue Location	Widely expressed. Highest levels are found in adult brain and skeletal muscle. Lower levels are found in heart and kidney

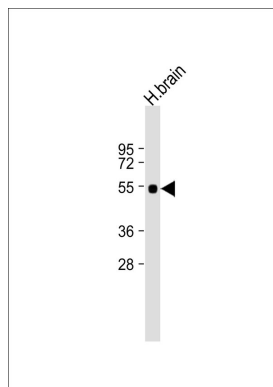
Background

Acts as guanine nucleotide exchange factor (GEF) for RhoA and RhoB GTPases.

References

Thiesen S.,et al.Biochem. Biophys. Res. Commun. 273:364-369(2000).
Wiemann S.,et al.Genome Res. 11:422-435(2001).
Guo J.H.,et al.Submitted (OCT-2001) to the EMBL/GenBank/DDBJ databases.
Ota T.,et al.Nat. Genet. 36:40-45(2004).
Totoki Y.,et al.Submitted (MAR-2005) to the EMBL/GenBank/DDBJ databases.

Images



Anti-XPLN Antibody at 1:1000 dilution + human brain lysate Lysates/proteins at 20 µg per lane. Secondary Goat Anti-Rabbit IgG, (H+L), Peroxidase conjugated at 1/10000 dilution. Predicted band size : 60 kDa Blocking/Dilution buffer: 5% NFDM/TBST.

Please note: All products are 'FOR RESEARCH USE ONLY. NOT FOR USE IN DIAGNOSTIC OR THERAPEUTIC PROCEDURES'.