

DOK1 Antibody

Purified Rabbit Polyclonal Antibody (Pab)

Catalog # AP53342

Product Information

Application	WB
Primary Accession	Q99704
Reactivity	Human
Host	Rabbit
Clonality	Polyclonal
Calculated MW	52392

Additional Information

Gene ID	1796
Other Names	Docking protein 1, Downstream of tyrosine kinase 1, p62(dok), pp62, DOK1
Dilution	WB~~ 1:1000
Format	Rabbit IgG in phosphate buffered saline , pH 7.4, 150mM NaCl, 0.09% (W/V) sodium azide and 50% glycerol
Storage	Store at -20 °C.Stable for 12 months from date of receipt

Protein Information

Name	DOK1
Function	DOK proteins are enzymatically inert adaptor or scaffolding proteins. They provide a docking platform for the assembly of multimolecular signaling complexes. DOK1 appears to be a negative regulator of the insulin signaling pathway. Modulates integrin activation by competing with talin for the same binding site on ITGB3.
Cellular Location	[Isoform 1]: Cytoplasm. Nucleus.
Tissue Location	Expressed in pancreas, heart, leukocyte and spleen. Expressed in both resting and activated peripheral blood T-cells Expressed in breast cancer.

Background

DOK proteins are enzymatically inert adaptor or scaffolding proteins. They provide a docking platform for the assembly of multimolecular signaling complexes. DOK1 appears to be a negative regulator of the insulin signaling pathway. Modulates integrin activation by competing with talin for the same binding site on

References

Carpino N.,et al.Cell 88:197-204(1997).

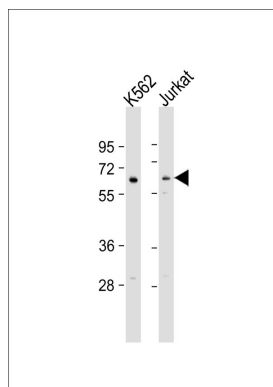
Hubert P.,et al.Eur. J. Immunogenet. 27:145-148(2000).

Yu W.,et al.Submitted (NOV-1997) to the EMBL/GenBank/DDBJ databases.

Hillier L.W.,et al.Nature 434:724-731(2005).

Wick M.J.,et al.J. Biol. Chem. 276:42843-42850(2001).

Images



All lanes : Anti-DOK1 Antibody at 1:1000 dilution Lane 1: K562 whole cell lysate Lane 2: Jurkat whole cell lysate Lysates/proteins at 20 µg per lane. Secondary Goat Anti-Rabbit IgG, (H+L), Peroxidase conjugated at 1/10000 dilution. Predicted band size : 52 kDa Blocking/Dilution buffer: 5% NFDM/TBST.

Please note: All products are 'FOR RESEARCH USE ONLY. NOT FOR USE IN DIAGNOSTIC OR THERAPEUTIC PROCEDURES'.