

c-FER Antibody

Purified Rabbit Polyclonal Antibody (Pab)

Catalog # AP53347

Product Information

Application	WB
Primary Accession	P07332
Reactivity	Human
Host	Rabbit
Clonality	Polyclonal
Calculated MW	93497

Additional Information

Gene ID	2242
Other Names	Tyrosine-protein kinase Fes/Fps, 2.7.10.2, Feline sarcoma/Fujinami avian sarcoma oncogene homolog, Proto-oncogene c-Fes, Proto-oncogene c-Fps, p93c-fes, FES, FPS
Target/Specificity	KLH-conjugated synthetic peptide encompassing a sequence within the center region of human c-FER. The exact sequence is proprietary.
Dilution	WB~~ 1:1000
Format	Rabbit IgG in phosphate buffered saline , pH 7.4, 150mM NaCl, 0.09% (W/V) sodium azide and 50% glycerol
Storage	Store at -20 °C.Stable for 12 months from date of receipt

Protein Information

Name	FES
Synonyms	FPS
Function	Tyrosine-protein kinase that acts downstream of cell surface receptors and plays a role in the regulation of the actin cytoskeleton, microtubule assembly, cell attachment and cell spreading. Plays a role in FCER1 (high affinity immunoglobulin epsilon receptor)-mediated signaling in mast cells. Acts down-stream of the activated FCER1 receptor and the mast/stem cell growth factor receptor KIT. Plays a role in the regulation of mast cell degranulation. Plays a role in the regulation of cell differentiation and promotes neurite outgrowth in response to NGF signaling. Plays a role in cell scattering and cell migration in response to HGF-induced activation of EZR. Phosphorylates BCR and down-regulates BCR kinase activity. Phosphorylates HCLS1/HS1, PECAM1, STAT3 and TRIM28.

Cellular Location	Cytoplasm, cytosol. Cytoplasm, cytoskeleton. Cell membrane; Peripheral membrane protein; Cytoplasmic side. Cytoplasmic vesicle. Golgi apparatus. Cell junction, focal adhesion Note=Distributed throughout the cytosol when the kinase is not activated. Association with microtubules requires activation of the kinase activity. Shuttles between focal adhesions and cell-cell contacts in epithelial cells. Recruited to the lateral cell membrane in polarized epithelial cells by interaction with phosphorylated EZR Detected at tubular membrane structures in the cytoplasm and at the cell periphery
Tissue Location	Widely expressed. Detected in adult colon epithelium (at protein level) (PubMed:16455651, PubMed:19051325) Expressed in melanocytes (at protein level) (PubMed:28463229)

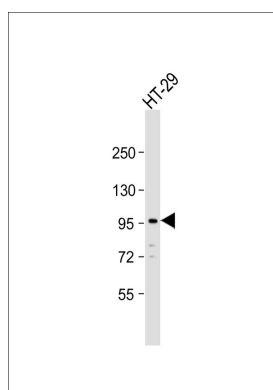
Background

Tyrosine-protein kinase that acts downstream of cell surface receptors and plays a role in the regulation of the actin cytoskeleton, microtubule assembly, cell attachment and cell spreading. Plays a role in FCER1 (high affinity immunoglobulin epsilon receptor)-mediated signaling in mast cells. Acts downstream of the activated FCER1 receptor and the mast/stem cell growth factor receptor KIT. Plays a role in the regulation of mast cell degranulation. Plays a role in the regulation of cell differentiation and promotes neurite outgrowth in response to NGF signaling. Plays a role in cell scattering and cell migration in response to HGF-induced activation of EZR. Phosphorylates BCR and down-regulates BCR kinase activity. Phosphorylates HCLS1/HS1, PECAM1, STAT3 and TRIM28.

References

Alcalay M.,et al.Oncogene 5:267-275(1990).
 Roebroek A.J.M.,et al.EMBO J. 4:2897-2903(1985).
 Lefebvre J.-C.,et al.Submitted (DEC-2003) to the EMBL/GenBank/DDBJ databases.
 Ota T.,et al.Nat. Genet. 36:40-45(2004).
 Zody M.C.,et al.Nature 440:671-675(2006).

Images



Anti-c-FER Antibody at 1:1000 dilution + HT-29 whole cell lysate Lysates/proteins at 20 µg per lane. Secondary Goat Anti-Rabbit IgG, (H+L), Peroxidase conjugated at 1/10000 dilution. Predicted band size : 93 kDa Blocking/Dilution buffer: 5% NFDM/TBST.

Please note: All products are 'FOR RESEARCH USE ONLY. NOT FOR USE IN DIAGNOSTIC OR THERAPEUTIC PROCEDURES'.