

PSMD11 Antibody

Purified Rabbit Polyclonal Antibody (Pab)

Catalog # AP53365

Product Information

Application	WB
Primary Accession	O00231
Reactivity	Human
Host	Rabbit
Clonality	Polyclonal
Calculated MW	47464

Additional Information

Gene ID	5717
Other Names	26S proteasome non-ATPase regulatory subunit 11, 26S proteasome regulatory subunit RPN6, 26S proteasome regulatory subunit S9, 26S proteasome regulatory subunit p44.5, PSMD11
Dilution	WB~~ 1:1000
Format	Rabbit IgG in phosphate buffered saline , pH 7.4, 150mM NaCl, 0.09% (W/V) sodium azide and 50% glycerol
Storage	Store at -20 °C.Stable for 12 months from date of receipt

Protein Information

Name	PSMD11
Function	Component of the 26S proteasome, a multiprotein complex involved in the ATP-dependent degradation of ubiquitinated proteins. This complex plays a key role in the maintenance of protein homeostasis by removing misfolded or damaged proteins, which could impair cellular functions, and by removing proteins whose functions are no longer required. Therefore, the proteasome participates in numerous cellular processes, including cell cycle progression, apoptosis, or DNA damage repair. In the complex, PSMD11 is required for proteasome assembly. Plays a key role in increased proteasome activity in embryonic stem cells (ESCs): its high expression in ESCs promotes enhanced assembly of the 26S proteasome, followed by higher proteasome activity.
Cellular Location	Nucleus. Cytoplasm, cytosol
Tissue Location	Highly expressed in embryonic stem cells (ESCs). Expression decreases as ESCs differentiate

Background

Component of the lid subcomplex of the 26S proteasome, a multiprotein complex involved in the ATP-dependent degradation of ubiquitinated proteins. In the complex, PSMD11 is required for proteasome assembly. Plays a key role in increased proteasome activity in embryonic stem cells (ESCs): its high expression in ESCs promotes enhanced assembly of the 26S proteasome, followed by higher proteasome activity.

References

Hoffman L.,et al.FEBS Lett. 404:179-184(1997).

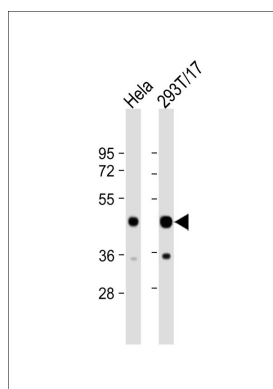
Saito A.,et al.Gene 203:241-250(1997).

Ota T.,et al.Nat. Genet. 36:40-45(2004).

Suzuki Y.,et al.Submitted (APR-2005) to the EMBL/GenBank/DDBJ databases.

Mural R.J.,et al.Submitted (SEP-2005) to the EMBL/GenBank/DDBJ databases.

Images



All lanes : Anti-PSMD11 Antibody at 1:1000 dilution Lane 1: HeLa whole cell lysate Lane 2: 293T/17 whole cell lysate Lysates/proteins at 20 µg per lane. Secondary Goat Anti-Rabbit IgG, (H+L), Peroxidase conjugated at 1/10000 dilution. Predicted band size : 47 kDa Blocking/Dilution buffer: 5% NFDM/TBST.

Please note: All products are 'FOR RESEARCH USE ONLY. NOT FOR USE IN DIAGNOSTIC OR THERAPEUTIC PROCEDURES'.