

TAF15 Antibody

Purified Rabbit Polyclonal Antibody (Pab)

Catalog # AP53376

Product Information

Application	WB
Primary Accession	Q92804
Reactivity	Human
Host	Rabbit
Clonality	Polyclonal
Calculated MW	61830

Additional Information

Gene ID	8148
Other Names	TATA-binding protein-associated factor 2N, 68 kDa TATA-binding protein-associated factor, TAF(II)68, TAFII68, RNA-binding protein 56, TAF15, RBP56, TAF2N
Dilution	WB~~ 1:1000
Format	Rabbit IgG in phosphate buffered saline , pH 7.4, 150mM NaCl, 0.09% (W/V) sodium azide and 50% glycerol
Storage	Store at -20 °C.Stable for 12 months from date of receipt

Protein Information

Name	TAF15
Synonyms	RBP56, TAF2N
Function	RNA and ssDNA-binding protein that may play specific roles during transcription initiation at distinct promoters. Binds to ssRNA containing the consensus sequence 5'-AGGUAA-3' (PubMed: 21256132). Can enter the preinitiation complex together with the RNA polymerase II (Pol II).
Cellular Location	Nucleus. Cytoplasm. Note=Shuttles from the nucleus to the cytoplasm
Tissue Location	Ubiquitous. Observed in all fetal and adult tissues

Background

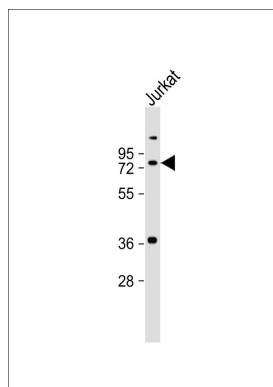
RNA and ssDNA-binding protein that may play specific roles during transcription initiation at distinct

promoters. Can enter the preinitiation complex together with the RNA polymerase II (Pol II).

References

Morohoshi F.,et al.Genomics 38:51-57(1996).
Bertolotti A.,et al.EMBO J. 15:5022-5031(1996).
Morohoshi F.,et al.Gene 221:191-198(1998).
Ota T.,et al.Nat. Genet. 36:40-45(2004).
Zody M.C.,et al.Nature 440:1045-1049(2006).

Images



Anti-TAF15 Antibody at 1:1000 dilution + Jurkat whole cell lysate Lysates/proteins at 20 µg per lane. Secondary Goat Anti-Rabbit IgG, (H+L), Peroxidase conjugated at 1/10000 dilution. Predicted band size : 62 kDa Blocking/Dilution buffer: 5% NFDM/TBST.

Please note: All products are 'FOR RESEARCH USE ONLY. NOT FOR USE IN DIAGNOSTIC OR THERAPEUTIC PROCEDURES'.