

Anti-Jak1 Antibody

Mouse Anti Human Monoclonal Antibody

Catalog # AP53401

Product Information

Application	WB, IF, IP
Primary Accession	P23458
Other Accession	NM_002227
Reactivity	Human, Rat
Host	Mouse
Clonality	Monoclonal
Isotype	IgG2a
Immunogen	Purified recombinant human Jak1 protein fragments expressed in E.coli.
Purification	Ammonium sulfate precipitation
Calculated MW	133277

Additional Information

Gene ID	3716
Other Names	JAK 1; JAK 1A; JAK 1B; JAK-1; JAK1; JAK1_HUMAN; JAK1A; JAK1B; Janus kinase 1 (a protein tyrosine kinase); Janus kinase 1; JTK3; Tyrosine protein kinase JAK 1; Tyrosine protein kinase JAK1; Tyrosine-protein kinase JAK1.
Dilution	WB~~1:1000 IF~~1:50~200 IP~~N/A
Format	Liquid in PBS containing 50% glycerol, 0.5% BSA and 0.02% sodium azide, pH 7.3.
Storage	Store at 4°C short term. Aliquot and store at -20°C long term. Avoid freeze/thaw cycles.

Protein Information

Name	JAK1
Synonyms	JAK1A, JAK1B
Function	Tyrosine kinase of the non-receptor type, involved in the IFN-alpha/beta/gamma signal pathway (PubMed: 16239216 , PubMed: 28111307 , PubMed: 32750333 , PubMed: 7615558 , PubMed: 8232552). Kinase partner for the interleukin (IL)-2 receptor (PubMed: 11909529) as well as interleukin (IL)-10 receptor (PubMed: 12133952). Kinase partner for the type I interferon receptor IFNAR2 (PubMed: 16239216 , PubMed: 28111307 , PubMed: 32750333 , PubMed: 7615558 , PubMed: 8232552). In response to interferon-binding to IFNAR1-IFNAR2 heterodimer, phosphorylates and

activates its binding partner IFNAR2, creating docking sites for STAT proteins (PubMed:[7759950](#)). Directly phosphorylates STAT proteins but also activates STAT signaling through the transactivation of other JAK kinases associated with signaling receptors (PubMed:[16239216](#), PubMed:[32750333](#), PubMed:[8232552](#)).

Cellular Location

Endomembrane system; Peripheral membrane protein. Note=Wholly intracellular, possibly membrane associated

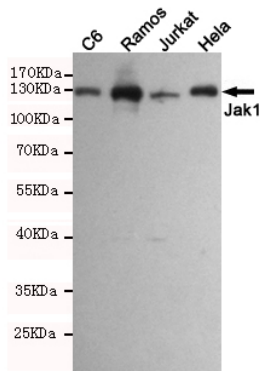
Tissue Location

Expressed at higher levels in primary colon tumors than in normal colon tissue. The expression level in metastatic colon tumors is comparable to the expression level in normal colon tissue

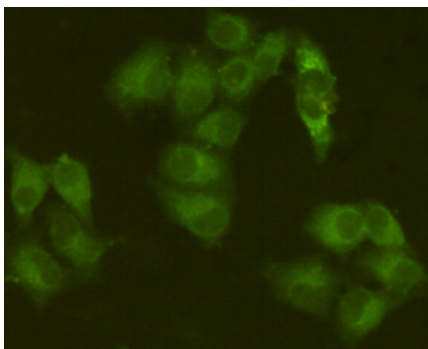
Background

Tyrosine kinase of the non-receptor type, involved in the IFN-alpha/beta/gamma signal pathway. Kinase partner for the interleukin (IL)-2 receptor.

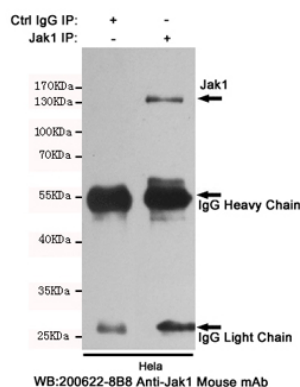
Images



Western blot analysis of extracts from C6,Ramos,Jurkat and HeLa cell lysates using Jak1 mouse mAb (1:1000 diluted).Predicted band size:130KDa.Observed band size:130KDa.



Immunocytochemistry staining of HeLa cells fixed with 4% Paraformaldehyde and using anti-Jak1 mouse mAb (dilution 1:200).



Immunoprecipitation analysis of HeLa cell lysates using Jak1 mouse mAb.

Please note: All products are 'FOR RESEARCH USE ONLY. NOT FOR USE IN DIAGNOSTIC OR THERAPEUTIC PROCEDURES'.