

# Anti-CD133 Monoclonal Antibody

Mouse Anti Human Monoclonal Antibody

Catalog # AP53414

## Product Information

---

Application	WB
Primary Accession	<a href="#">O43490</a>
Other Accession	<a href="#">NM_006017</a>
Reactivity	Human
Host	Mouse
Clonality	Monoclonal
Isotype	IgG2b
Immunogen	Purified recombinant human Prominin-1 protein fragments expressed in E.coli.
Purification	Affinity purified
Calculated MW	97202

## Additional Information

---

Gene ID	8842
Other Names	Prominin-1;Antigen AC133;Prominin-like protein 1;CD133.
Dilution	WB~~1:3000
Format	Purified mouse monoclonal antibody in PBS(Ph 7.4) containing with 0.09% (W/V) sodium azide,0.1mg/mlBSA and 50% glycerol.
Storage	Store at -20 °C.Stable for 12 months from date of receipt

## Protein Information

---

Name	PROM1
Synonyms	PROML1
Function	May play a role in cell differentiation, proliferation and apoptosis (PubMed: <a href="#">24556617</a> ). Binds cholesterol in cholesterol- containing plasma membrane microdomains and may play a role in the organization of the apical plasma membrane in epithelial cells. During early retinal development acts as a key regulator of disk morphogenesis. Involved in regulation of MAPK and Akt signaling pathways. In neuroblastoma cells suppresses cell differentiation such as neurite outgrowth in a RET-dependent manner (PubMed: <a href="#">20818439</a> ).
Cellular Location	Apical cell membrane; Multi-pass membrane protein. Cell projection,

microvillus membrane; Multi-pass membrane protein. Cell projection, cilium, photoreceptor outer segment Endoplasmic reticulum. Endoplasmic reticulum-Golgi intermediate compartment. Note=Found in extracellular membrane particles in various body fluids such as cerebrospinal fluid, saliva, seminal fluid and urine

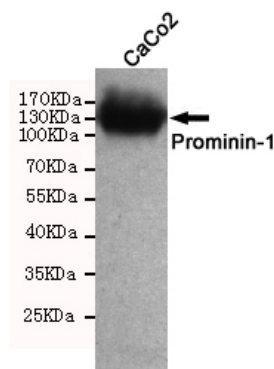
### Tissue Location

Isoform 1 is selectively expressed on CD34 hematopoietic stem and progenitor cells in adult and fetal bone marrow, fetal liver, cord blood and adult peripheral blood. Isoform 1 is not detected on other blood cells. Isoform 1 is also expressed in a number of non-lymphoid tissues including retina, pancreas, placenta, kidney, liver, lung, brain and heart. Found in saliva within small membrane particles. Isoform 2 is predominantly expressed in fetal liver, skeletal muscle, kidney, and heart as well as adult pancreas, kidney, liver, lung, and placenta. Isoform 2 is highly expressed in fetal liver, low in bone marrow, and barely detectable in peripheral blood Isoform 2 is expressed on hematopoietic stem cells and in epidermal basal cells (at protein level). Expressed in adult retina by rod and cone photoreceptor cells (at protein level)

## Background

Binds cholesterol in cholesterol-containing plasma membrane microdomains. Proposed to play a role in apical plasma membrane organization of epithelial cells. During early retinal development acts as a key regulator of disk morphogenesis. Involved in regulati

## Images



Western blot detection of Prominin-1 in CaCo2 cell lysate using Prominin-1 mouse mAb (1:3000 diluted). Predicted band size: 133 kDa. Observed band size: 133 kDa

Please note: All products are 'FOR RESEARCH USE ONLY. NOT FOR USE IN DIAGNOSTIC OR THERAPEUTIC PROCEDURES'.