

Anti-HER2/ErbB2 Antibody

Mouse Anti Human Monoclonal Antibody

Catalog # AP53430

Product Information

Application	WB
Primary Accession	P04626
Other Accession	NM_004448
Reactivity	Transfected
Host	Mouse
Clonality	Monoclonal
Isotype	IgG1
Immunogen	Purified recombinant human HER2/ErbB2 protein fragments expressed in E.coli.
Purification	Affinity purified
Calculated MW	137910

Additional Information

Gene ID	2064
Other Names	Verb b2 erythroblastic leukemia viral oncogene homolog 2, neuro/glioblastoma derived oncogene homolog;C erb B2/neu protein;CD340;CD340 antigen;Cerb B2/neu protein;CerbB2;Erb b2 receptor tyrosine kinase 2;ERBB2;ERBB2_HUMAN;HER 2;HER 2/NEU;HER2;Herstatin;Human epidermal growth factor receptor 2;Metastatic lymph node gene 19 protein;MLN 19;MLN19;NEU;NEU proto oncogene;Neuro/glioblastoma derived oncogene homolog;Neuroblastoma/glioblastoma derived oncogene homolog;NGL;p185erbB2;Proto-oncogene c-ErbB-2;Proto-oncogene Neu;Receptor tyrosine-protein kinase erbB-2;TKR1;Tyrosine kinase type cell surface receptor HER2;Tyrosine kinase-type cell surface receptor HER2;V erb b2 avian erythroblastic leukemia viral oncogene homolog 2 (neuro/glioblastoma derived oncogene homolog);V erb b2 avian erythroblastic leukemia viral oncogene homolog 2;V erb b2 erythroblastic leukemia viral oncoprotein 2;V erb b2 erythroblastic leukemia viral oncogene homolog 2, neuro/glioblastoma derived oncogene homolog (avian);V erb b2 erythroblastic leukemia viral oncogene homolog 2, neuro/glioblastoma derived oncogene homolog;Verb b2 erythroblastic leukemia viral oncogene homolog 2, neuro/glioblastoma derived oncogene homolog (avian).
Dilution	WB~~1:1000
Format	Purified mouse monoclonal antibody in PBS(pH 7.4) containing with 0.09% (W/V) sodium azide and 50% glycerol.
Storage	Store at -20 °C.Stable for 12 months from date of receipt

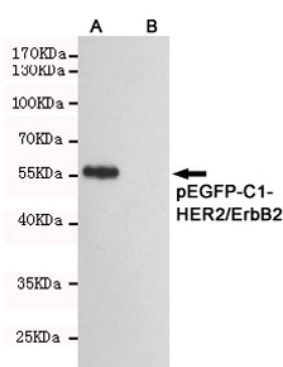
Protein Information

Name	ERBB2
Synonyms	HER2, MLN19, NEU, NGL
Function	Protein tyrosine kinase that is part of several cell surface receptor complexes, but that apparently needs a coreceptor for ligand binding. Essential component of a neuregulin-receptor complex, although neuregulins do not interact with it alone. GP30 is a potential ligand for this receptor. Regulates outgrowth and stabilization of peripheral microtubules (MTs). Upon ERBB2 activation, the MEMO1-RHOA-DIAPH1 signaling pathway elicits the phosphorylation and thus the inhibition of GSK3B at cell membrane. This prevents the phosphorylation of APC and CLASP2, allowing its association with the cell membrane. In turn, membrane-bound APC allows the localization of MACF1 to the cell membrane, which is required for microtubule capture and stabilization.
Cellular Location	Cell membrane; Single-pass type I membrane protein. Cell projection, ruffle membrane; Single-pass type I membrane protein. Note=Internalized from the cell membrane in response to EGF stimulation. [Isoform 2]: Cytoplasm. Nucleus.
Tissue Location	Expressed in a variety of tumor tissues including primary breast tumors and tumors from small bowel, esophagus, kidney and mouth.

Background

Protein tyrosine kinase that is part of several cell surface receptor complexes, but that apparently needs a coreceptor for ligand binding. Essential component of a neuregulin-receptor complex, although neuregulins do not interact with it alone. GP30 is a

Images



Western blot detection of HER2/ErbB2 fragment in CHO-K1 cell lysate (B) and CHO-K1 transfected by pEGFP-C1-HER2/ErbB2 (A) cell lysate using HER2/ErbB2 mouse mAb (1:1000 diluted). Predicted band size: 55kDa. Observed band size: 55kDa.

Please note: All products are 'FOR RESEARCH USE ONLY. NOT FOR USE IN DIAGNOSTIC OR THERAPEUTIC PROCEDURES'.