

IDUA Antibody (Center)

Affinity Purified Rabbit Polyclonal Antibody (Pab)

Catalog # AP5343c

Product Information

Application	WB, IHC-P, FC, E
Primary Accession	P35475
Other Accession	NP_000194.2
Reactivity	Human, Rat, Mouse
Host	Rabbit
Clonality	Polyclonal
Isotype	Rabbit IgG
Calculated MW	72670
Antigen Region	236-264

Additional Information

Gene ID	3425
Other Names	Alpha-L-iduronidase, IDUA
Target/Specificity	This IDUA antibody is generated from rabbits immunized with a KLH conjugated synthetic peptide between 236-264 amino acids from the Central region of human IDUA.
Dilution	WB~~1:1000 IHC-P~~1:100~500 FC~~1:25 E~~Use at an assay dependent concentration.
Format	Purified polyclonal antibody supplied in PBS with 0.05% (V/V) Proclin 300. This antibody is prepared by Saturated Ammonium Sulfate (SAS) precipitation followed by dialysis against PBS.
Storage	Maintain refrigerated at 2-8°C for up to 2 weeks. For long term storage store at -20°C in small aliquots to prevent freeze-thaw cycles.
Precautions	IDUA Antibody (Center) is for research use only and not for use in diagnostic or therapeutic procedures.

Protein Information

Name	IDUA
Cellular Location	Lysosome.
Tissue Location	Ubiquitous.

Background

IDUA encodes an enzyme that hydrolyzes the terminal alpha-L-iduronic acid residues of two glycosaminoglycans, dermatan sulfate and heparan sulfate. This hydrolysis is required for the lysosomal degradation of these glycosaminoglycans.

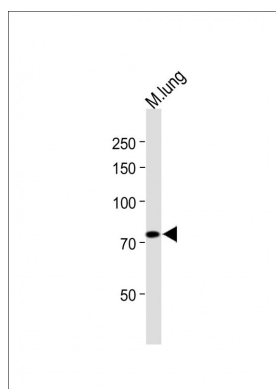
References

Amr, K., et al. Genet Test Mol Biomarkers 13(6):761-764(2009)

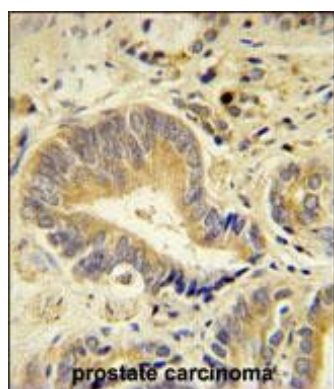
Vazna, A., et al. Am. J. Med. Genet. A 149A (5), 965-974 (2009)

Sugawara, K., et al. J. Hum. Genet. 53(5):467-474(2008)

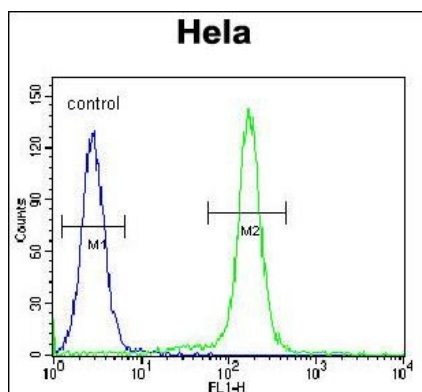
Images



All lanes : Anti-IDUA Antibody (Center) at 1:1000 dilution
Lane 1: mouse lung lysate Lysates/proteins at 20 µg per lane. Secondary Goat Anti-Rabbit IgG, (H+L), Peroxidase conjugated (ASP1615) at 1/15000 dilution. Observed band size : 72kDa Blocking/Dilution buffer: 5% NFDM/TBST.



IDUA Antibody (Center) (Cat. #AP5343c) immunohistochemistry analysis in formalin fixed and paraffin embedded human prostate carcinoma followed by peroxidase conjugation of the secondary antibody and DAB staining. This data demonstrates the use of the IDUA Antibody (Center) for immunohistochemistry. Clinical relevance has not been evaluated.



IDUA Antibody (Center) (Cat. #AP5343c) flow cytometric analysis of HeLa cells (right histogram) compared to a negative control cell (left histogram). FITC-conjugated goat-anti-rabbit secondary antibodies were used for the analysis.

Please note: All products are 'FOR RESEARCH USE ONLY. NOT FOR USE IN DIAGNOSTIC OR THERAPEUTIC PROCEDURES'.