

# PINCH (3C12) Mouse mAb

Catalog # AP53507

## Product Information

---

<b>Application</b>	WB, ICC, IP
<b>Primary Accession</b>	<a href="#">P48059</a>
<b>Host</b>	Mouse
<b>Clonality</b>	Monoclonal Antibody
<b>Calculated MW</b>	37251

## Additional Information

---

<b>Gene ID</b>	3987
<b>Other Names</b>	PINCH; PINCH1; PINCH-1; LIMS1
<b>Dilution</b>	WB~~1:1000 ICC~~N/A IP~~N/A

## Protein Information

---

<b>Name</b>	LIMS1
<b>Synonyms</b>	PINCH, PINCH1
<b>Function</b>	Within the IPP (ILK-PINCH-PARVIN) complex, binds to F-actin, promoting F-actin bundling, a process required to generate force for actin cytoskeleton reorganization and subsequent dynamic cell adhesion events such as cell spreading and migration.
<b>Cellular Location</b>	Cell junction, focal adhesion. Cell membrane; Peripheral membrane protein; Cytoplasmic side
<b>Tissue Location</b>	Expressed in most tissues except in the brain.

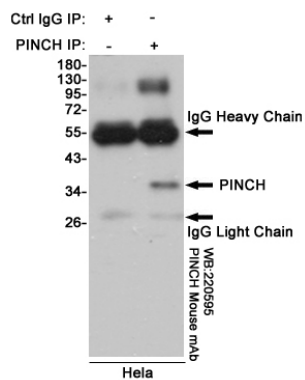
## Background

---

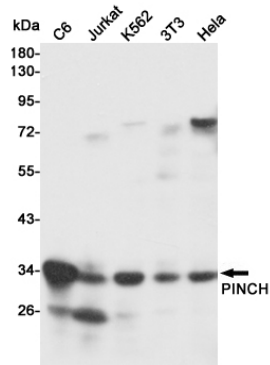
Swiss-Prot Acc.P48059.The protein encoded by this gene is an adaptor protein which contains five LIM domains, or double zinc fingers. The protein is likely involved in integrin signaling through its LIM domain-mediated interaction with integrin-linked kinase, found in focal adhesion plaques. It is also thought to act as a bridge linking integrin-linked kinase to NCK adaptor protein 2, which is involved in growth factor receptor kinase signaling pathways. Its localization to the periphery of spreading cells also suggests that this protein may play a role in integrin-mediated cell adhesion or spreading. Several transcript variants encoding different isoforms have been found for this gene.

## Images

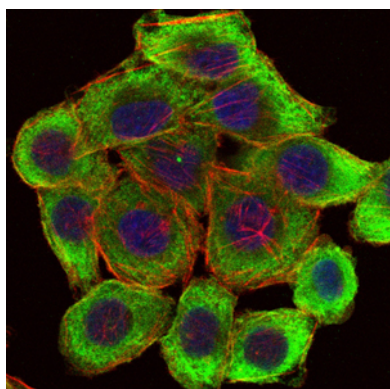
---



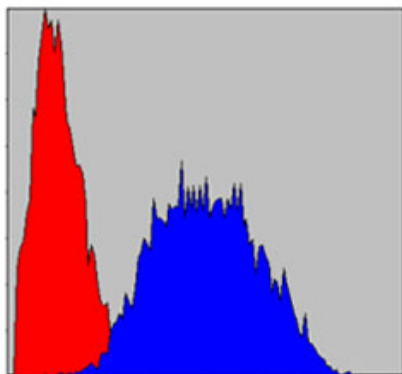
Immunoprecipitation analysis of HeLa cell lysates using PINCH mouse mAb.



Western blot detection of PINCH in C6, Jurkat, K562, 3T3 and HeLa cell lysates using PINCH mouse mAb (1:1000 diluted). Predicted band size: 37 kDa. Observed band size: 35 kDa.



Immunofluorescence analysis of HepG2 cells using PINCH mouse mAb (green). Blue



Flow cytometric analysis of HeLa cells using PINCH mouse mAb (blue) and negative control (red).

Please note: All products are 'FOR RESEARCH USE ONLY. NOT FOR USE IN DIAGNOSTIC OR THERAPEUTIC PROCEDURES'.