

CDT1/DUP Rabbit pAb

Catalog # AP53528

Product Information

Application	WB, IHC, FC, IP
Primary Accession	Q9H211
Host	Rabbit
Clonality	Polyclonal Antibody
Calculated MW	60390

Additional Information

Gene ID	81620
Other Names	DNA replication factor Cdt1, Double parked homolog, DUP, CDT1 {ECO:0000312 EMBL:AAG45181.1}
Dilution	WB~~1:1000 IHC~~1:100~500 FC~~1:10~50 IP~~N/A
Format	50mM Tris-Glycine(pH 7.4), 0.15M NaCl, 40%Glycerol, 0.01% sodium azide and 0.05% BSA.
Storage	Store at 4°C short term. Aliquot and store at -20°C long term. Avoid freeze/thaw cycles.

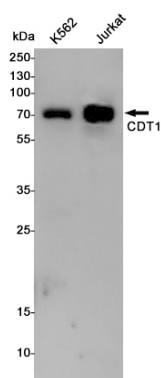
Protein Information

Name	CDT1 {ECO:0000312 EMBL:AAG45181.1}
Function	Required for both DNA replication and mitosis (PubMed: 11125146 , PubMed: 14993212 , PubMed: 21856198 , PubMed: 22581055 , PubMed: 26842564). DNA replication licensing factor, required for pre-replication complex assembly. Cooperates with CDC6 and the origin recognition complex (ORC) during G1 phase of the cell cycle to promote the loading of the mini-chromosome maintenance (MCM) complex onto DNA to generate pre-replication complexes (pre-RC) (PubMed: 14672932). Required also for mitosis by promoting stable kinetochore-microtubule attachments (PubMed: 22581055). Potential oncogene (By similarity).
Cellular Location	Nucleus. Chromosome, centromere, kinetochore. Note=Transiently localizes to kinetochores during prometaphase and metaphase

Background

Swiss-Prot Acc.Q9H211.

Images



Western blot detection of CDT1 in K562,Jurkat cell lysates using CDT1 Rabbit pAb(1:1000 diluted).Predicted band size:60KDa.Observed band size:65KDa.

Please note: All products are 'FOR RESEARCH USE ONLY. NOT FOR USE IN DIAGNOSTIC OR THERAPEUTIC PROCEDURES'.