

Anti-GPR25 Antibody

Catalog # AP53675

Product Information

Application	WB
Primary Accession	O00155
Reactivity	Human, Mouse, Rat
Host	Rabbit
Clonality	Polyclonal
Calculated MW	38779

Additional Information

Gene ID	2848
Other Names	Probable G-protein coupled receptor 25
Target/Specificity	Recognizes endogenous levels of GPR25 protein.
Dilution	WB~~1/500 - 1/1000
Format	Liquid in 0.42% Potassium phosphate, 0.87% Sodium chloride, pH 7.3, 30% glycerol, and 0.09% (W/V) sodium azide.
Storage	Store at -20 °C.Stable for 12 months from date of receipt

Protein Information

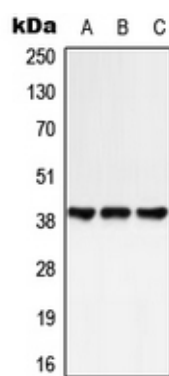
Name	GPR25
Function	Orphan receptor.
Cellular Location	Cell membrane; Multi-pass membrane protein.

Background

Rabbit polyclonal antibody to GPR25

Images

Western blot analysis of GPR25 expression in HeLa (A), NIH3T3 (B), rat spleen (C) whole cell lysates.



Please note: All products are 'FOR RESEARCH USE ONLY. NOT FOR USE IN DIAGNOSTIC OR THERAPEUTIC PROCEDURES'.