

# Anti-Granzyme B/H Antibody

Catalog # AP53677

## Product Information

Application	WB
Primary Accession	<a href="#">P10144</a>
Other Accession	<a href="#">P20718</a>
Reactivity	Human, Mouse, Rat
Host	Rabbit
Clonality	Polyclonal
Calculated MW	27716

## Additional Information

Gene ID	3002
Other Names	GZMB; CGL1; CSPB; CTLA1; GRB; Granzyme B; C11; CTLA-1; Cathepsin G-like 1; CTSL1; Cytotoxic T-lymphocyte proteinase 2; Lymphocyte protease; Fragmentin-2; Granzyme-2; Human lymphocyte protein; HLP; SECT; T-cell serine protease 1-3E; GZMH; CGL2; CTSL2; Granzyme H; CCP-X; Cathepsin G-like 2; CTSL2; Cytotoxic T-lymphocyte proteinase; Cytotoxic serine protease C; CSP-C
Target/Specificity	Recognizes endogenous levels of Granzyme B/H protein.
Dilution	WB~~1/500 - 1/1000
Format	Liquid in 0.42% Potassium phosphate, 0.87% Sodium chloride, pH 7.3, 30% glycerol, and 0.09% (W/V) sodium azide.
Storage	Store at -20 °C.Stable for 12 months from date of receipt

## Protein Information

Name	GZMB {ECO:0000303   PubMed:32188940, ECO:0000312   HGNC:HGNC:4709}
Function	Abundant protease in the cytosolic granules of cytotoxic T- cells and NK-cells which activates caspase-independent pyroptosis when delivered into the target cell through the immunological synapse (PubMed: <a href="#">1985927</a> , PubMed: <a href="#">3262682</a> , PubMed: <a href="#">3263427</a> ). It cleaves after Asp (PubMed: <a href="#">1985927</a> , PubMed: <a href="#">8258716</a> ). Once delivered into the target cell, acts by catalyzing cleavage of gasdermin-E (GSDME), releasing the pore- forming moiety of GSDME, thereby triggering pyroptosis and target cell death (PubMed: <a href="#">31953257</a> , PubMed: <a href="#">32188940</a> ). Seems to be linked to an activation cascade of caspases (aspartate-specific cysteine proteases) responsible for apoptosis execution. Cleaves caspase-3, -9 and -10 (CASP3, CASP9 and CASP10, respectively) to give rise to active enzymes mediating apoptosis

(PubMed:[9852092](#)). Cleaves and activates CASP7 in response to bacterial infection, promoting plasma membrane repair (By similarity).

## Cellular Location

Secreted. Cytolytic granule. Note=Delivered into the target cell by perforin (PubMed:20038786).

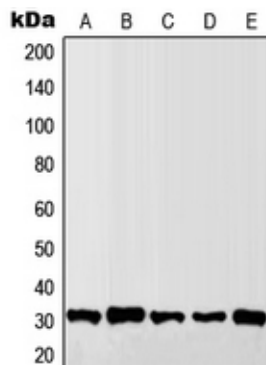
## Background

---

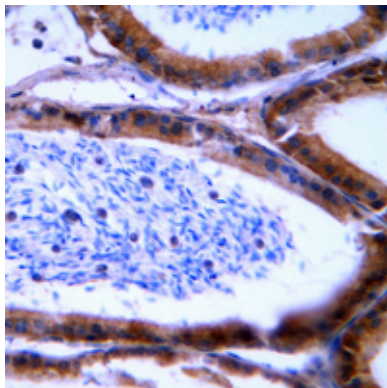
Rabbit polyclonal antibody to Granzyme B/H

## Images

---



Western blot analysis of Granzyme B/H expression in MCF7 (A), Raw264.7 (B), SP2/O (C), H9C2 (D), HL60 (E) whole cell lysates.



Immunohistochemical analysis of Granzyme B/H staining in human tonsil formalin fixed paraffin embedded tissue section. The section was pre-treated using heat mediated antigen retrieval with sodium citrate buffer (pH 6.0). The section was then incubated with the antibody at room temperature and detected using an HRP conjugated compact polymer system. DAB was used as the chromogen. The section was then counterstained with haematoxylin and mounted with DPX.

Please note: All products are 'FOR RESEARCH USE ONLY. NOT FOR USE IN DIAGNOSTIC OR THERAPEUTIC PROCEDURES'.