

Anti-MAGEA3/6 Antibody

Catalog # AP53687

Product Information

| | |
|-------------------|------------------------|
| Application | WB |
| Primary Accession | P43360 |
| Reactivity | Human, Mouse, Rat |
| Host | Rabbit |
| Clonality | Polyclonal |
| Calculated MW | 34891 |

Additional Information

| | |
|--------------------|---|
| Gene ID | 4105 |
| Other Names | MAGE6; Melanoma-associated antigen 6; Cancer/testis antigen 1.6; CT1.6; MAGE-6 antigen; MAGE3B antigen |
| Target/Specificity | Recognizes endogenous levels of MAGEA6 protein. |
| Dilution | WB~~1/500 - 1/1000 |
| Format | Liquid in 0.42% Potassium phosphate, 0.87% Sodium chloride, pH 7.3, 30% glycerol, and 0.09% (W/V) sodium azide. |
| Storage | Store at -20 °C.Stable for 12 months from date of receipt |

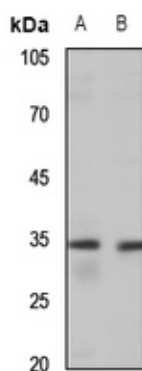
Protein Information

| | |
|-----------------|--|
| Name | MAGEA6 {ECO:0000303 PubMed:31267705, ECO:0000312 HGNC:HGNC:6804} |
| Function | Activator of ubiquitin ligase activity of RING-type zinc finger-containing E3 ubiquitin-protein ligases that acts as a repressor of autophagy (PubMed: 17942928 , PubMed: 20864041 , PubMed: 31267705). May enhance ubiquitin ligase activity of TRIM28 and stimulate p53/TP53 ubiquitination by TRIM28. Proposed to act through recruitment and/or stabilization of the Ubl-conjugating enzyme (E2) at the E3:substrate complex (PubMed: 17942928 , PubMed: 20864041). May play a role in tumor transformation or aspects of tumor progression (PubMed: 17942928 , PubMed: 20864041). In vitro promotes cell viability in melanoma cell lines (PubMed: 17942928). |
| Tissue Location | Expressed in many tumors of several types, such as melanoma, head and neck squamous cell carcinoma, lung carcinoma and breast carcinoma, but not in normal tissues except for testes |

Background

Rabbit polyclonal antibody to MAGEA6

Images



Western blot analysis of MAGEA3/6 expression in mouse muscle (A), rat kidney (B) whole cell lysates.

Please note: All products are 'FOR RESEARCH USE ONLY. NOT FOR USE IN DIAGNOSTIC OR THERAPEUTIC PROCEDURES'.