

Anti-SGLT2 Antibody

Catalog # AP53701

Product Information

Application	WB
Primary Accession	P31639
Reactivity	Human, Mouse, Rat
Host	Rabbit
Clonality	Polyclonal
Calculated MW	72897

Additional Information

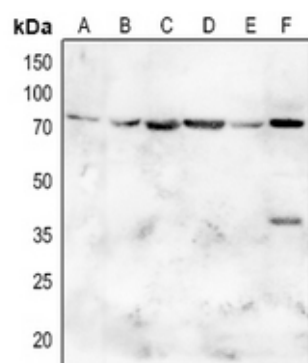
Gene ID	6524
Other Names	SGLT2; Sodium/glucose cotransporter 2; Na(+)/glucose cotransporter 2; Low affinity sodium-glucose cotransporter; Solute carrier family 5 member 2
Target/Specificity	Recognizes endogenous levels of SGLT2 protein.
Dilution	WB~~1/500 - 1/1000
Format	Liquid in 0.42% Potassium phosphate, 0.87% Sodium chloride, pH 7.3, 30% glycerol, and 0.09% (W/V) sodium azide.
Storage	Store at -20 °C.Stable for 12 months from date of receipt

Protein Information

Name	SLC5A2 {ECO:0000303 PubMed:14614622}
Function	Electrogenic Na(+)-coupled sugar symporter that actively transports D-glucose at the plasma membrane, with a Na(+) to sugar coupling ratio of 1:1 (PubMed: 20980548 , PubMed: 28592437 , PubMed: 34880493 , PubMed: 37217492 , PubMed: 38057552). Transporter activity is driven by a transmembrane Na(+) electrochemical gradient set by the Na(+)/K(+) pump (PubMed: 20980548 , PubMed: 28592437 , PubMed: 34880493). Unlike SLC5A1/SGLT1, requires the auxiliary protein PDZK1IP1/MAP17 for full transporter activity (PubMed: 37217492). Has a primary role in D-glucose reabsorption from glomerular filtrate across the brush border of the early proximal tubules of the kidney (By similarity).
Cellular Location	Apical cell membrane; Multi-pass membrane protein

Background

Images



Western blot analysis of SGLT2 expression in HEK293T (A), Hela (B), DLD (C), rat heart (D), rat liver (E), rat kidney (F) whole cell lysates.

Please note: All products are 'FOR RESEARCH USE ONLY. NOT FOR USE IN DIAGNOSTIC OR THERAPEUTIC PROCEDURES'.