

Anti-Spasmolysin Antibody

Catalog # AP53706

Product Information

Application	WB
Primary Accession	Q03403
Reactivity	Human, Mouse, Rat
Host	Rabbit
Clonality	Polyclonal
Calculated MW	14284

Additional Information

Gene ID	7032
Other Names	SML1; Trefoil factor 2; Spasmolysin; Spasmolytic polypeptide; SP
Target/Specificity	Recognizes endogenous levels of Spasmolysin protein.
Dilution	WB~~1/500 - 1/1000
Format	Liquid in 0.42% Potassium phosphate, 0.87% Sodium chloride, pH 7.3, 30% glycerol, and 0.09% (W/V) sodium azide.
Storage	Store at -20 °C. Stable for 12 months from date of receipt

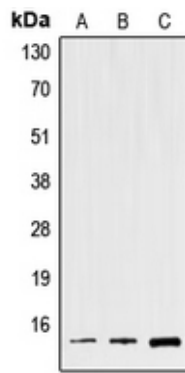
Protein Information

Name	TFF2
Synonyms	SML1
Function	Inhibits gastrointestinal motility and gastric acid secretion. Could function as a structural component of gastric mucus, possibly by stabilizing glycoproteins in the mucus gel through interactions with carbohydrate side chains (By similarity).
Cellular Location	Secreted.
Tissue Location	Stomach.

Background

Rabbit polyclonal antibody to Spasmolysin

Images



Western blot analysis of Spasmolysin expression in HEK293T (A), Raw264.7 (B), rat liver (C) whole cell lysates.

Please note: All products are 'FOR RESEARCH USE ONLY. NOT FOR USE IN DIAGNOSTIC OR THERAPEUTIC PROCEDURES'.