

Anti-UBE2A/B Antibody

Catalog # AP53708

Product Information

Application	WB
Primary Accession	P49459
Other Accession	P63146
Reactivity	Human, Mouse, Rat
Host	Rabbit
Clonality	Polyclonal
Calculated MW	17315

Additional Information

Gene ID	7319
Other Names	UBE2A; RAD6A; Ubiquitin-conjugating enzyme E2 A; RAD6 homolog A; HR6A; hHR6A; Ubiquitin carrier protein A; Ubiquitin-protein ligase A; UBE2B; RAD6B; Ubiquitin-conjugating enzyme E2 B; RAD6 homolog B; HR6B; hHR6B; Ubiquitin carrier protein B; Ubiquitin-conjugating enzyme E2-17 kDa; Ubiquitin-protein ligase B
Target/Specificity	Recognizes endogenous levels of UBE2A/B protein.
Dilution	WB~~1/500 - 1/1000
Format	Liquid in 0.42% Potassium phosphate, 0.87% Sodium chloride, pH 7.3, 30% glycerol, and 0.09% (W/V) sodium azide.
Storage	Store at -20 °C.Stable for 12 months from date of receipt

Protein Information

Name	UBE2A {ECO:0000303 PubMed:23685073, ECO:0000312 HGNC:HGNC:12472}
Function	E2 ubiquitin-conjugating enzyme that accepts ubiquitin from the ubiquitin-activating enzyme E1 and transfers it to a E3 ubiquitin- protein ligase (PubMed: 16337599 , PubMed: 20061386 , PubMed: 23685073 , PubMed: 25582440 , PubMed: 38297121). In vitro catalyzes 'Lys-11', as well as 'Lys-48'-linked polyubiquitination (PubMed: 20061386). Together with the E3 enzyme BRE1 (RNF20 and/or RNF40), plays a role in transcription regulation by catalyzing the monoubiquitination of histone H2B at 'Lys- 120' to form H2BK120ub1 (PubMed: 16337599). H2BK120ub1 gives a specific tag for epigenetic transcriptional activation, elongation by RNA polymerase II, telomeric silencing, and is also a prerequisite for H3K4me and H3K79me formation (PubMed: 16337599). Involved in mitophagy by acting as a E2

ubiquitin-conjugating enzyme for PRKN (PubMed:[23685073](#)). In association with the E3 enzyme UBR4, is involved in N-end rule-dependent protein degradation (PubMed:[38182926](#)). In association with the E3 ubiquitin-protein ligase complex SIFI, inhibits the mitochondrial stress response by acting as a E2 ubiquitin- conjugating enzyme for UBR4 and KCMF1 (PubMed:[38297121](#)).

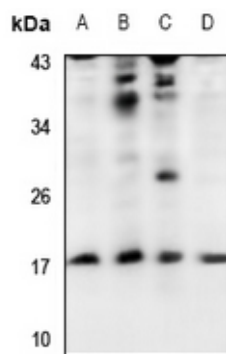
Cellular Location

Late endosome. Lysosome

Background

Rabbit polyclonal antibody to UBE2A/B

Images



Western blot analysis of UBE2A/B expression in MCF7 (A), A549 (B), C6 (C), MEF (D) whole cell lysates.

Please note: All products are 'FOR RESEARCH USE ONLY. NOT FOR USE IN DIAGNOSTIC OR THERAPEUTIC PROCEDURES'.