

Anti-SLC25A11 Antibody

Catalog # AP53711

Product Information

Application	WB
Primary Accession	Q02978
Reactivity	Human, Mouse, Rat
Host	Rabbit
Clonality	Polyclonal
Calculated MW	34062

Additional Information

Gene ID	8402
Other Names	SLC20A4; Mitochondrial 2-oxoglutarate/malate carrier protein; OGCP; Solute carrier family 25 member 11
Target/Specificity	Recognizes endogenous levels of SLC25A11 protein.
Dilution	WB~~1/500 - 1/1000
Format	Liquid in 0.42% Potassium phosphate, 0.87% Sodium chloride, pH 7.3, 30% glycerol, and 0.09% (W/V) sodium azide.
Storage	Store at -20 °C.Stable for 12 months from date of receipt

Protein Information

Name	SLC25A11
Synonyms	SLC20A4
Function	Catalyzes the transport of 2-oxoglutarate (alpha- oxoglutarate) across the inner mitochondrial membrane in an electroneutral exchange for malate. Can also exchange 2-oxoglutarate for other dicarboxylic acids such as malonate, succinate, maleate and oxaloacetate, although with lower affinity. Contributes to several metabolic processes, including the malate-aspartate shuttle, the oxoglutarate/isocitrate shuttle, in gluconeogenesis from lactate, and in nitrogen metabolism (By similarity). Maintains mitochondrial fusion and fission events, and the organization and morphology of cristae (PubMed: 21448454). Involved in the regulation of apoptosis (By similarity). Helps protect from cytotoxic-induced apoptosis by modulating glutathione levels in mitochondria (By similarity).
Cellular Location	Mitochondrion inner membrane {ECO:0000250 UniProtKB:P97700}; Multi-pass membrane protein {ECO:0000250 UniProtKB:P97700}

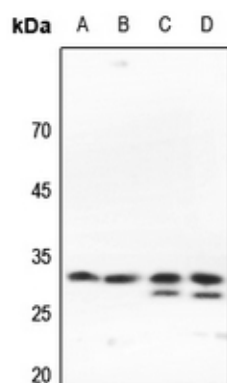
Tissue Location

Most highly expressed in the heart.

Background

Rabbit polyclonal antibody to SLC25A11

Images



Western blot analysis of SLC25A11 expression in HEK293T (A), Hela (B), rat kidney (C), rat spleen (D) whole cell lysates.

Please note: All products are 'FOR RESEARCH USE ONLY. NOT FOR USE IN DIAGNOSTIC OR THERAPEUTIC PROCEDURES'.