

Anti-Cyclin A1/2 Antibody

Catalog # AP53716

Product Information

Application	WB, IF
Primary Accession	P78396
Other Accession	P20248
Reactivity	Human, Mouse, Rat
Host	Rabbit
Clonality	Polyclonal
Calculated MW	52358

Additional Information

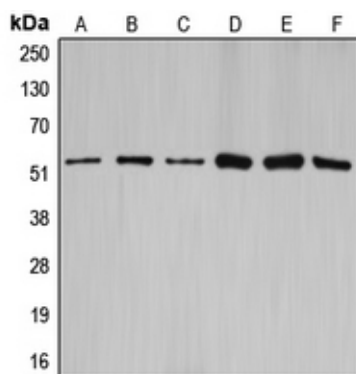
Gene ID	8900
Other Names	CCNA1; Cyclin-A1; CCNA2; CCN1; CCNA; Cyclin-A2; Cyclin-A
Target/Specificity	Recognizes endogenous levels of Cyclin A1/2 protein.
Dilution	WB~~1/500 - 1/1000 IF~~1/50 - 1/200
Format	Liquid in 0.42% Potassium phosphate, 0.87% Sodium chloride, pH 7.3, 30% glycerol, and 0.09% (W/V) sodium azide.
Storage	Store at -20 °C.Stable for 12 months from date of receipt

Protein Information

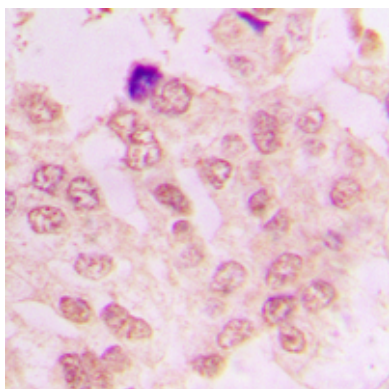
Name	CCNA1
Function	May be involved in the control of the cell cycle at the G1/S (start) and G2/M (mitosis) transitions. May primarily function in the control of the germline meiotic cell cycle and additionally in the control of mitotic cell cycle in some somatic cells.
Cellular Location	Nucleus {ECO:0000250 UniProtKB:P20248}.
Tissue Location	Very high levels in testis and very low levels in brain. Also found in myeloid leukemia cell lines

Background

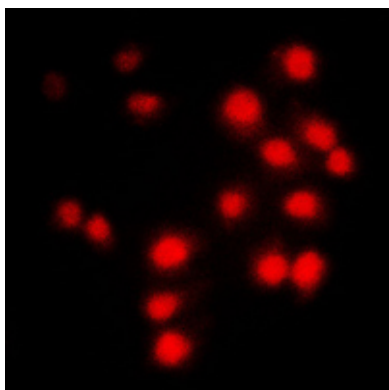
Rabbit polyclonal antibody to Cyclin A1/2



Western blot analysis of Cyclin A1/2 expression in HEK293T (A), NIH3T3 (B), rat brain (C), SW626 (D), SKOV3 (E), A2780 (F) whole cell lysates.



Immunohistochemical analysis of Cyclin A1/2 staining in human lung cancer formalin fixed paraffin embedded tissue section. The section was pre-treated using heat mediated antigen retrieval with sodium citrate buffer (pH 6.0). The section was then incubated with the antibody at room temperature and detected using an HRP conjugated compact polymer system. DAB was used as the chromogen. The section was then counterstained with haematoxylin and mounted with DPX.



Immunofluorescent analysis of Cyclin A1/2 staining in NIH3T3 cells. Formalin-fixed cells were permeabilized with 0.1% Triton X-100 in TBS for 5-10 minutes and blocked with 3% BSA-PBS for 30 minutes at room temperature. Cells were probed with the primary antibody in 3% BSA-PBS and incubated overnight at 4 °C in a humidified chamber. Cells were washed with PBST and incubated with a DyLight 594-conjugated secondary antibody (red) in PBS at room temperature in the dark.

Please note: All products are 'FOR RESEARCH USE ONLY. NOT FOR USE IN DIAGNOSTIC OR THERAPEUTIC PROCEDURES'.