

Anti-Kalirin Antibody

Catalog # AP53717

Product Information

Application	WB, IF
Primary Accession	O60229
Reactivity	Human, Mouse, Rat
Host	Rabbit
Clonality	Polyclonal
Calculated MW	340261

Additional Information

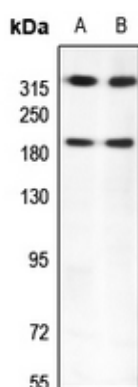
Gene ID	8997
Other Names	DUET; DUO; HAPIP; TRAD; Kalirin; Huntingtin-associated protein-interacting protein; Protein Duo; Serine/threonine-protein kinase with Dbl- and pleckstrin homology domain
Target/Specificity	Recognizes endogenous levels of Kalirin protein.
Dilution	WB~~1/500 - 1/1000 IF~~1/50 - 1/200
Format	Liquid in 0.42% Potassium phosphate, 0.87% Sodium chloride, pH 7.3, 30% glycerol, and 0.09% (W/V) sodium azide.
Storage	Store at -20 °C.Stable for 12 months from date of receipt

Protein Information

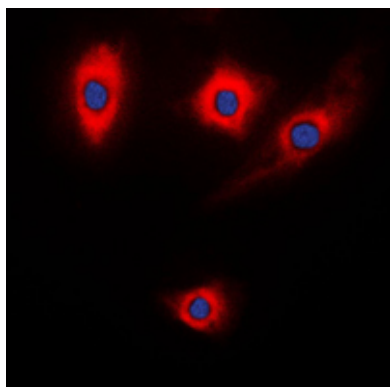
Name	KALRN (HGNC:4814)
Synonyms	DUET, DUO, HAPIP, TRAD
Function	Promotes the exchange of GDP by GTP. Activates specific Rho GTPase family members, thereby inducing various signaling mechanisms that regulate neuronal shape, growth, and plasticity, through their effects on the actin cytoskeleton. Induces lamellipodia independent of its GEF activity.
Cellular Location	Cytoplasm. Cytoplasm, cytoskeleton. Note=Associated with the cytoskeleton
Tissue Location	Isoform 2 is brain specific. Highly expressed in cerebral cortex, putamen, amygdala, hippocampus and caudate nucleus Weakly expressed in brain stem and cerebellum. Isoform 4 is expressed in skeletal muscle.

Background

Images



Western blot analysis of Kalirin expression in Hela (A), H446 (B) whole cell lysates.



Immunofluorescent analysis of Kalirin staining in NIH3T3 cells. Formalin-fixed cells were permeabilized with 0.1% Triton X-100 in TBS for 5-10 minutes and blocked with 3% BSA-PBS for 30 minutes at room temperature. Cells were probed with the primary antibody in 3% BSA-PBS and incubated overnight at 4 °C in a humidified chamber. Cells were washed with PBST and incubated with a DyLight 594-conjugated secondary antibody (red) in PBS at room temperature in the dark. DAPI was used to stain the cell nuclei (blue).

Please note: All products are 'FOR RESEARCH USE ONLY. NOT FOR USE IN DIAGNOSTIC OR THERAPEUTIC PROCEDURES'.