

# Anti-SFRS11 Antibody

Catalog # AP53720

## Product Information

---

<b>Application</b>	WB
<b>Primary Accession</b>	<a href="#">Q05519</a>
<b>Reactivity</b>	Human, Mouse, Rat
<b>Host</b>	Rabbit
<b>Clonality</b>	Polyclonal
<b>Calculated MW</b>	53542

## Additional Information

---

<b>Gene ID</b>	9295
<b>Other Names</b>	SFRS11; Serine/arginine-rich splicing factor 11; Arginine-rich 54 kDa nuclear protein; p54; Splicing factor, arginine/serine-rich 11
<b>Target/Specificity</b>	KLH-conjugated synthetic peptide encompassing a sequence within the center region of human SFRS11. The exact sequence is proprietary.
<b>Dilution</b>	WB~~1/500 - 1/1000
<b>Format</b>	Liquid in 0.42% Potassium phosphate, 0.87% Sodium chloride, pH 7.3, 30% glycerol, and 0.09% (W/V) sodium azide.
<b>Storage</b>	Store at -20 °C.Stable for 12 months from date of receipt

## Protein Information

---

<b>Name</b>	SRSF11
<b>Synonyms</b>	SFRS11
<b>Function</b>	May function in pre-mRNA splicing.
<b>Cellular Location</b>	Nucleus. Note=Colocalizes with spliceosome components

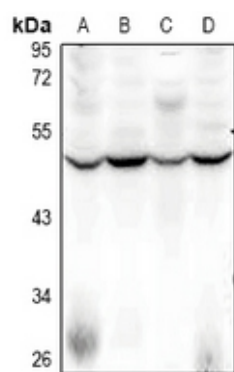
## Background

---

Rabbit polyclonal antibody to SFRS11

## Images

---



Western blot analysis of SFRS11 expression in CT26 (A), H9C2 (B), SGC7901 (C), A549 (D) whole cell lysates.

Please note: All products are 'FOR RESEARCH USE ONLY. NOT FOR USE IN DIAGNOSTIC OR THERAPEUTIC PROCEDURES'.