

# Anti-PSMD6 Antibody

Catalog # AP53722

## Product Information

---

Application	WB
Primary Accession	<a href="#">Q15008</a>
Reactivity	Human, Mouse, Rat
Host	Rabbit
Clonality	Polyclonal
Calculated MW	45531

## Additional Information

---

Gene ID	9861
Other Names	KIAA0107; PFAAP4; 26S proteasome non-ATPase regulatory subunit 6; 26S proteasome regulatory subunit RPN7; 26S proteasome regulatory subunit S10; Breast cancer-associated protein SGA-113M; Phosphonoformate immuno-associated protein 4; Proteasome regulatory particle subunit p44S10; p42A
Target/Specificity	KLH-conjugated synthetic peptide encompassing a sequence within the center region of human PSMD6. The exact sequence is proprietary.
Dilution	WB~~1/500 - 1/1000
Format	Liquid in 0.42% Potassium phosphate, 0.87% Sodium chloride, pH 7.3, 30% glycerol, and 0.09% (W/V) sodium azide.
Storage	Store at -20 °C.Stable for 12 months from date of receipt

## Protein Information

---

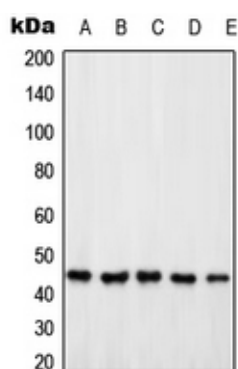
Name	PSMD6
Synonyms	KIAA0107, PFAAP4
Function	Component of the 26S proteasome, a multiprotein complex involved in the ATP-dependent degradation of ubiquitinated proteins. This complex plays a key role in the maintenance of protein homeostasis by removing misfolded or damaged proteins, which could impair cellular functions, and by removing proteins whose functions are no longer required. Therefore, the proteasome participates in numerous cellular processes, including cell cycle progression, apoptosis, or DNA damage repair.

## Background

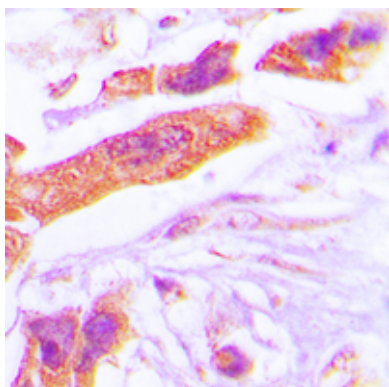
---

## Images

---



Western blot analysis of PSMD6 expression in HeLa (A), Jurkat (B), HEK293T (C), SP2/0 (D), PC12 (E) whole cell lysates.



Immunohistochemical analysis of PSMD6 staining in human lung cancer formalin fixed paraffin embedded tissue section. The section was pre-treated using heat mediated antigen retrieval with sodium citrate buffer (pH 6.0). The section was then incubated with the antibody at room temperature and detected using an HRP conjugated compact polymer system. DAB was used as the chromogen. The section was then counterstained with haematoxylin and mounted with DPX.

Please note: All products are 'FOR RESEARCH USE ONLY. NOT FOR USE IN DIAGNOSTIC OR THERAPEUTIC PROCEDURES'.