

Anti-Collagen 20 alpha 1 Antibody

Catalog # AP53740

Product Information

Application	WB, IF
Primary Accession	Q9P218
Reactivity	Human
Host	Rabbit
Clonality	Polyclonal
Calculated MW	135830

Additional Information

Gene ID	57642
Other Names	KIAA1510; Collagen alpha-1(XX) chain
Target/Specificity	Recognizes endogenous levels of Collagen 20 alpha 1 protein.
Dilution	WB~~1/500 - 1/1000 IF~~1/50 - 1/200
Format	Liquid in 0.42% Potassium phosphate, 0.87% Sodium chloride, pH 7.3, 30% glycerol, and 0.09% (W/V) sodium azide.
Storage	Store at -20 °C.Stable for 12 months from date of receipt

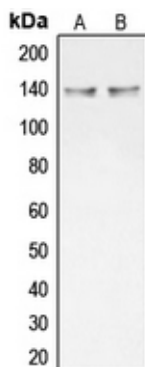
Protein Information

Name	COL20A1
Synonyms	KIAA1510
Function	Probable collagen protein.
Cellular Location	Secreted, extracellular space.
Tissue Location	High expression in heart, lung, liver, skeletal muscle, kidney, pancreas, spleen, testis, ovary, subthalamic nucleus and fetal liver. Weak expression in other tissues tested

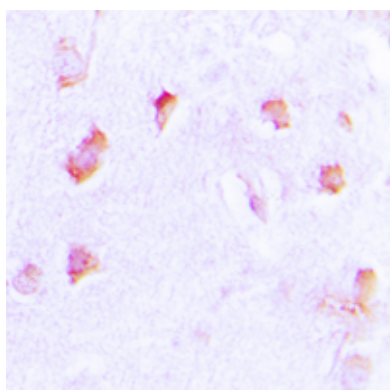
Background

Rabbit polyclonal antibody to Collagen 20 alpha 1

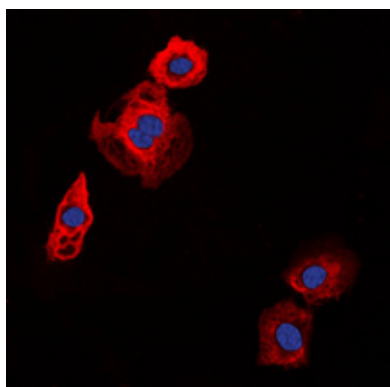
Images



Western blot analysis of Collagen 20 alpha 1 expression in HT29 (A), NCIH292 (B) whole cell lysates.



Immunohistochemical analysis of Collagen 20 alpha 1 staining in human brain formalin fixed paraffin embedded tissue section. The section was pre-treated using heat mediated antigen retrieval with sodium citrate buffer (pH 6.0). The section was then incubated with the antibody at room temperature and detected using an HRP conjugated compact polymer system. DAB was used as the chromogen. The section was then counterstained with haematoxylin and mounted with DPX.



Immunofluorescent analysis of Collagen 20 alpha 1 staining in HT29 cells. Formalin-fixed cells were permeabilized with 0.1% Triton X-100 in TBS for 5-10 minutes and blocked with 3% BSA-PBS for 30 minutes at room temperature. Cells were probed with the primary antibody in 3% BSA-PBS and incubated overnight at 4 °C in a humidified chamber. Cells were washed with PBST and incubated with a DyLight 594-conjugated secondary antibody (red) in PBS at room temperature in the dark. DAPI was used to stain the cell nuclei (blue).

Please note: All products are 'FOR RESEARCH USE ONLY. NOT FOR USE IN DIAGNOSTIC OR THERAPEUTIC PROCEDURES'.