

Anti-IL-22RA2 Antibody

Catalog # AP53750

Product Information

Application	WB
Primary Accession	Q969J5
Reactivity	Human, Mouse, Rat
Host	Rabbit
Clonality	Polyclonal
Calculated MW	30550

Additional Information

Gene ID	116379
Other Names	Interleukin-22 receptor subunit alpha-2; IL-22 receptor subunit alpha-2; IL-22R-alpha-2; IL-22RA2; Cytokine receptor class-II member 10; Cytokine receptor family 2 member 10; CRF2-10; Cytokine receptor family type 2, soluble 1; CRF2-S1; Interleukin-22-binding protein; IL-22BP; IL22BP; ZcytoR16
Target/Specificity	Recognizes endogenous levels of IL-22RA2 protein.
Dilution	WB~~1/500 - 1/1000
Format	Liquid in 0.42% Potassium phosphate, 0.87% Sodium chloride, pH 7.3, 30% glycerol, and 0.09% (W/V) sodium azide.
Storage	Store at -20 °C.Stable for 12 months from date of receipt

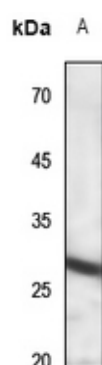
Protein Information

Name	IL22RA2
Function	Isoform 2 is a receptor for IL22. Binds to IL22, prevents interaction with the functional IL-22R complex and blocks the activity of IL22 (in vitro). May play an important role as an IL22 antagonist in the regulation of inflammatory responses.
Cellular Location	Secreted.
Tissue Location	Expressed in placenta, spleen, breast, skin and lung. Also detected in intestinal tract, testis, brain, heart and thymus. No expression found in prostate, bladder, kidney, ovary, muscle, bone marrow, liver and uterus. Isoform 1 is expressed only in placenta. Isoform 2 is expressed in placenta and breast and at lower level in spleen, skin, thymus and stomach

Background

Rabbit polyclonal antibody to IL-22RA2

Images



Western blot analysis of IL-22RA2 expression in Hela (A) whole cell lysates.

Please note: All products are 'FOR RESEARCH USE ONLY. NOT FOR USE IN DIAGNOSTIC OR THERAPEUTIC PROCEDURES'.