

Anti-Neuromedin B Antibody

Catalog # AP53762

Product Information

Application	WB
Primary Accession	P08949
Reactivity	Human, Mouse, Rat
Host	Rabbit
Clonality	Polyclonal
Calculated MW	13252

Additional Information

Gene ID	4828
Other Names	Neuromedin-B
Target/Specificity	KLH-conjugated synthetic peptide encompassing a sequence within the N-term region of human Neuromedin B. The exact sequence is proprietary.
Dilution	WB~~1/500 - 1/1000
Format	Liquid in 0.42% Potassium phosphate, 0.87% Sodium chloride, pH 7.3, 30% glycerol, and 0.09% (W/V) sodium azide.
Storage	Store at -20 °C.Stable for 12 months from date of receipt

Protein Information

Name	NMB
Function	Stimulates smooth muscle contraction (By similarity). Induces sighing by acting directly on the pre-Botzinger complex, a cluster of several thousand neurons in the ventrolateral medulla responsible for inspiration during respiratory activity (By similarity). Contributes to the induction of sneezing following exposure to chemical irritants or allergens which causes release of NMB by nasal sensory neurons and activation of NMBR-expressing neurons in the sneeze-evoking region of the brainstem (By similarity). These in turn activate neurons of the caudal ventral respiratory group, giving rise to the sneezing response (By similarity). Contributes to induction of acute itch, possibly through activation of the NMBR receptor on dorsal root ganglion neurons (By similarity). Increases expression of NMBR and steroidogenic mediators STAR, CYP11A1 and HSD3B1 in Leydig cells, induces secretion of testosterone by Leydig cells and also promotes Leydig cell proliferation (By similarity). Plays a role in the innate immune response to influenza A virus infection by enhancing interferon alpha expression and reducing expression of IL6 (PubMed: 31601264). Plays a role in CSF1-induced proliferation of

osteoclast precursors by contributing to the positive regulation of the expression of the CSF1 receptor CSF1R (By similarity).

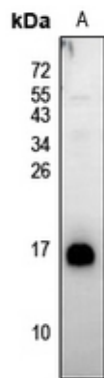
Cellular Location

Secreted {ECO:0000250|UniProtKB:Q9CR53}. Cell projection, neuron projection {ECO:0000250|UniProtKB:Q9CR53}. Note=In neurons of the retrotrapezoid nucleus//parafacial respiratory group, expressed on neuron projections which project into the pre-Botzinger complex. {ECO:0000250|UniProtKB:Q9CR53}

Background

Rabbit polyclonal antibody to Neuromedin B

Images



Western blot analysis of Neuromedin B expression in MCF7 (A) whole cell lysates.

Please note: All products are 'FOR RESEARCH USE ONLY. NOT FOR USE IN DIAGNOSTIC OR THERAPEUTIC PROCEDURES'.