

Anti-BRI3 Antibody

Catalog # AP53769

Product Information

Application	WB
Primary Accession	O95415
Reactivity	Human, Mouse, Rat
Host	Rabbit
Clonality	Polyclonal
Calculated MW	13645

Additional Information

Gene ID	25798
Other Names	Brain protein I3; pRGR2
Target/Specificity	KLH-conjugated synthetic peptide encompassing a sequence within the N-term region of human BRI3. The exact sequence is proprietary.
Dilution	WB~~1/500 - 1/1000
Format	Liquid in 0.42% Potassium phosphate, 0.87% Sodium chloride, pH 7.3, 30% glycerol, and 0.09% (W/V) sodium azide.
Storage	Store at -20 °C.Stable for 12 months from date of receipt

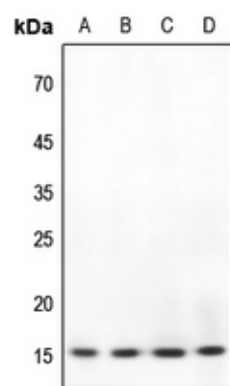
Protein Information

Name	BRI3
Function	Participates in tumor necrosis factor-alpha (TNF)-induced cell death (PubMed: 14592447). May be a target of Wnt/beta-catenin signaling in the liver (PubMed: 20538055).
Cellular Location	Lysosome membrane; Multi-pass membrane protein [Isoform 2]: Cytoplasm. Nucleus Note=Diffuse localization in the cytoplasm and nucleus

Background

Rabbit polyclonal antibody to BRI3

Images



Western blot analysis of BRI3 expression in HEK293T (A), Hela (B), H446 (C), rat kidney (D) whole cell lysates.

Please note: All products are 'FOR RESEARCH USE ONLY. NOT FOR USE IN DIAGNOSTIC OR THERAPEUTIC PROCEDURES'.