

# Anti-RhoF Antibody

Catalog # AP53770

## Product Information

---

Application	WB
Primary Accession	<a href="#">Q9HBH0</a>
Reactivity	Human, Mouse, Rat
Host	Rabbit
Clonality	Polyclonal
Calculated MW	23625

## Additional Information

---

Gene ID	54509
Other Names	ARHF; RIF; Rho-related GTP-binding protein RhoF; Rho family GTPase Rif; Rho in filopodia
Target/Specificity	KLH-conjugated synthetic peptide encompassing a sequence within the center region of human RhoF. The exact sequence is proprietary.
Dilution	WB~~1/500 - 1/1000
Format	Liquid in 0.42% Potassium phosphate, 0.87% Sodium chloride, pH 7.3, 30% glycerol, and 0.09% (W/V) sodium azide.
Storage	Store at -20 °C.Stable for 12 months from date of receipt

## Protein Information

---

Name	RHOF
Synonyms	ARHF, RIF
Function	Plasma membrane-associated small GTPase which cycles between an active GTP-bound and an inactive GDP-bound state. Causes the formation of thin, actin-rich surface projections called filopodia. Functions cooperatively with CDC42 and Rac to generate additional structures, increasing the diversity of actin-based morphology.
Cellular Location	Cell membrane; Lipid-anchor; Cytoplasmic side. Cytoplasm, cytoskeleton

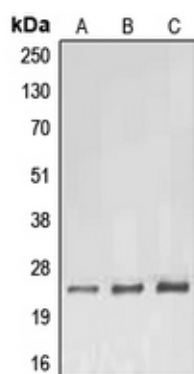
## Background

---

Rabbit polyclonal antibody to RhoF

## Images

---



Western blot analysis of RhoF expression in HeLa (A), Raw264.7 (B), H9C2 (C) whole cell lysates.

Please note: All products are 'FOR RESEARCH USE ONLY. NOT FOR USE IN DIAGNOSTIC OR THERAPEUTIC PROCEDURES'.