

Anti-BIKE Antibody

Catalog # AP53772

Product Information

| | |
|--------------------------|------------------------|
| Application | WB |
| Primary Accession | Q9NSY1 |
| Reactivity | Human, Mouse, Rat |
| Host | Rabbit |
| Clonality | Polyclonal |
| Calculated MW | 129172 |

Additional Information

| | |
|---------------------------|---|
| Gene ID | 55589 |
| Other Names | BIKE; BMP-2-inducible protein kinase; BIKe |
| Target/Specificity | Recognizes endogenous levels of BIKE protein. |
| Dilution | WB~~1/500 - 1/1000 |
| Format | Liquid in 0.42% Potassium phosphate, 0.87% Sodium chloride, pH 7.3, 30% glycerol, and 0.09% (W/V) sodium azide. |
| Storage | Store at -20 °C.Stable for 12 months from date of receipt |

Protein Information

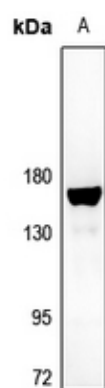
| | |
|--------------------------|--|
| Name | BMP2K |
| Synonyms | BIKE |
| Function | May be involved in osteoblast differentiation. |
| Cellular Location | Nucleus. |

Background

Rabbit polyclonal antibody to BIKE

Images

Western blot analysis of BIKE expression in mouse liver
(A) whole cell lysates.



Please note: All products are 'FOR RESEARCH USE ONLY. NOT FOR USE IN DIAGNOSTIC OR THERAPEUTIC PROCEDURES'.