

Anti-BET Antibody

Catalog # AP53775

Product Information

Application	WB
Primary Accession	Q8NET8
Reactivity	Human, Mouse, Rat
Host	Rabbit
Clonality	Polyclonal
Calculated MW	78475

Additional Information

Gene ID	92737
Other Names	BET; Delta and Notch-like epidermal growth factor-related receptor
Target/Specificity	KLH-conjugated synthetic peptide encompassing a sequence within the C-term region of human BET. The exact sequence is proprietary.
Dilution	WB~~1/500 - 1/1000
Format	Liquid in 0.42% Potassium phosphate, 0.87% Sodium chloride, pH 7.3, 30% glycerol, and 0.09% (W/V) sodium azide.
Storage	Store at -20 °C.Stable for 12 months from date of receipt

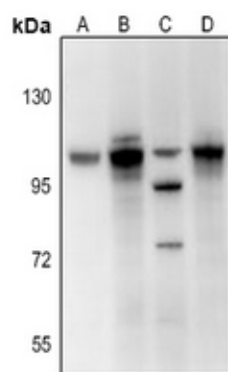
Protein Information

Name	DNER
Synonyms	BET
Function	Activator of the NOTCH1 pathway. May mediate neuron-glia interaction during astrocytogenesis (By similarity).
Cellular Location	Cell membrane; Single-pass type I membrane protein. Note=Present on the membrane of dendrites and cell bodies but excluded from axonal membrane. Also found in early endosomes in the somatodendritic region (By similarity).
Tissue Location	Expressed in brain, spinal cord and adrenal gland.

Background

Rabbit polyclonal antibody to BET

Images



Western blot analysis of BET expression in rat kidney (A), SP20 (B), C6 (C), SHSY5Y (D) whole cell lysates.

Please note: All products are 'FOR RESEARCH USE ONLY. NOT FOR USE IN DIAGNOSTIC OR THERAPEUTIC PROCEDURES'.