

# Anti-Collagen 26 alpha 1 Antibody

Catalog # AP53776

## Product Information

---

<b>Application</b>	WB
<b>Primary Accession</b>	<a href="#">Q96A83</a>
<b>Reactivity</b>	Human, Rat
<b>Host</b>	Rabbit
<b>Clonality</b>	Polyclonal
<b>Calculated MW</b>	45381

## Additional Information

---

<b>Gene ID</b>	136227
<b>Other Names</b>	EMID2; EMU2; Collagen alpha-1(XXVI) chain; Alpha-1 type XXVI collagen; EMI domain-containing protein 2; Emilin and multimerin domain-containing protein 2; Emu2
<b>Target/Specificity</b>	KLH-conjugated synthetic peptide encompassing a sequence within the center region of human Collagen 26 alpha 1. The exact sequence is proprietary.
<b>Dilution</b>	WB~~1/500 - 1/1000
<b>Format</b>	Liquid in 0.42% Potassium phosphate, 0.87% Sodium chloride, pH 7.3, 30% glycerol, and 0.09% (W/V) sodium azide.
<b>Storage</b>	Store at -20 °C.Stable for 12 months from date of receipt

## Protein Information

---

<b>Name</b>	COL26A1
<b>Synonyms</b>	EMID2, EMU2
<b>Cellular Location</b>	Secreted, extracellular space, extracellular matrix

## Background

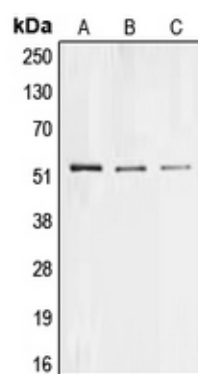
---

Rabbit polyclonal antibody to Collagen 26 alpha 1

## Images

---

Western blot analysis of Collagen 26 alpha 1 expression



in HeLa (A), PC12 (B), H9C2 (C) whole cell lysates.

Please note: All products are 'FOR RESEARCH USE ONLY. NOT FOR USE IN DIAGNOSTIC OR THERAPEUTIC PROCEDURES'.