

Anti-TLE2 Antibody

Catalog # AP53781

Product Information

Application	WB
Primary Accession	Q04725
Reactivity	Human
Host	Rabbit
Clonality	Polyclonal
Calculated MW	79841

Additional Information

Gene ID	7089
Other Names	Transducin-like enhancer protein 2; Enhancer of split groucho-like protein 2; ESG2
Target/Specificity	Recognizes endogenous levels of TLE2 protein.
Dilution	WB~~1/500 - 1/1000
Format	Liquid in 0.42% Potassium phosphate, 0.87% Sodium chloride, pH 7.3, 30% glycerol, and 0.09% (W/V) sodium azide.
Storage	Store at -20 °C.Stable for 12 months from date of receipt

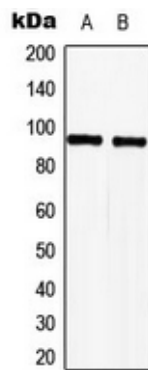
Protein Information

Name	TLE2
Function	Transcriptional corepressor that binds to a number of transcription factors. Inhibits the transcriptional activation mediated by CTNNB1 and TCF family members in Wnt signaling. The effects of full- length TLE family members may be modulated by association with dominant-negative AES (By similarity).
Cellular Location	Nucleus.
Tissue Location	In all tissues examined, mostly in heart, brain, and muscle

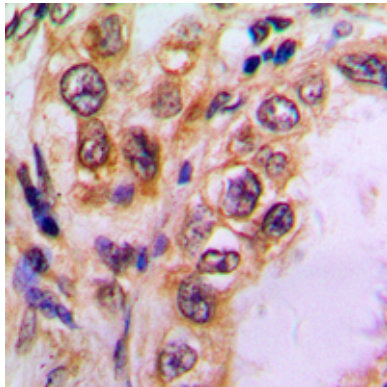
Background

Rabbit polyclonal antibody to TLE2

Images



Western blot analysis of TLE2 expression in HeLa (A), Jurkat (B) whole cell lysates.



Immunohistochemical analysis of TLE2 staining in human lung cancer formalin fixed paraffin embedded tissue section. The section was pre-treated using heat mediated antigen retrieval with sodium citrate buffer (pH 6.0). The section was then incubated with the antibody at room temperature and detected using an HRP conjugated compact polymer system. DAB was used as the chromogen. The section was then counterstained with haematoxylin and mounted with DPX.

Please note: All products are 'FOR RESEARCH USE ONLY. NOT FOR USE IN DIAGNOSTIC OR THERAPEUTIC PROCEDURES'.