

Anti-CARD14 Antibody

Catalog # AP53785

Product Information

Application	WB, IF
Primary Accession	Q9BXL6
Reactivity	Human, Mouse, Rat
Host	Rabbit
Clonality	Polyclonal
Calculated MW	113270

Additional Information

Gene ID	79092
Other Names	CARMA2; Caspase recruitment domain-containing protein 14; CARD-containing MAGUK protein 2; Carma 2
Target/Specificity	Recognizes endogenous levels of CARD14 protein.
Dilution	WB~~1/500 - 1/1000 IF~~1/50 - 1/200
Format	Liquid in 0.42% Potassium phosphate, 0.87% Sodium chloride, pH 7.3, 30% glycerol, and 0.09% (W/V) sodium azide.
Storage	Store at -20 °C.Stable for 12 months from date of receipt

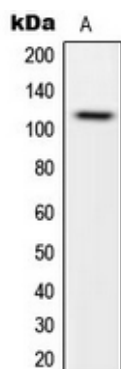
Protein Information

Name	CARD14
Synonyms	CARMA2
Function	Acts as a scaffolding protein that can activate the inflammatory transcription factor NF-kappa-B and p38/JNK MAP kinase signaling pathways. Forms a signaling complex with BCL10 and MALT1, and activates MALT1 proteolytic activity and inflammatory gene expression. MALT1 is indispensable for CARD14-induced activation of NF-kappa-B and p38/JNK MAP kinases (PubMed: 11278692 , PubMed: 21302310 , PubMed: 27071417 , PubMed: 27113748). May play a role in signaling mediated by TRAF2, TRAF3 and TRAF6 and protects cells against apoptosis.
Cellular Location	[Isoform 1]: Cytoplasm [Isoform 3]: Cytoplasm
Tissue Location	Isoform 1 is detected in placenta and epidermal keratinocytes (PubMed:22521418). Isoform 2 is detected in leukocytes and fetal brain (PubMed:22521418).

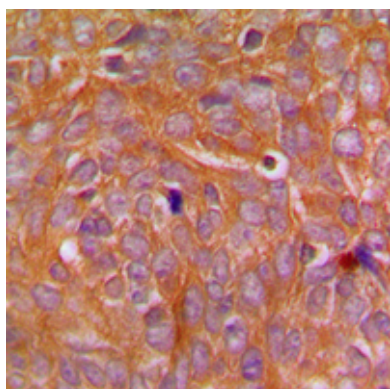
Background

Rabbit polyclonal antibody to CARD14

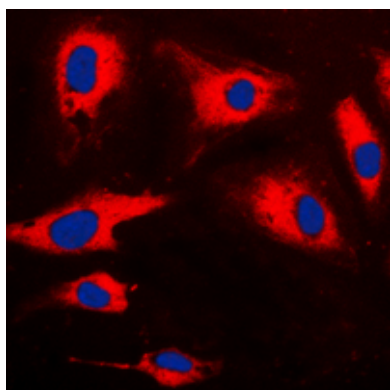
Images



Western blot analysis of CARD14 expression in HeLa (A) whole cell lysates.



Immunohistochemical analysis of CARD14 staining in human breast cancer formalin fixed paraffin embedded tissue section. The section was pre-treated using heat mediated antigen retrieval with sodium citrate buffer (pH 6.0). The section was then incubated with the antibody at room temperature and detected using an HRP conjugated compact polymer system. DAB was used as the chromogen. The section was then counterstained with haematoxylin and mounted with DPX.



Immunofluorescent analysis of CARD14 staining in HeLa cells. Formalin-fixed cells were permeabilized with 0.1% Triton X-100 in TBS for 5-10 minutes and blocked with 3% BSA-PBS for 30 minutes at room temperature. Cells were probed with the primary antibody in 3% BSA-PBS and incubated overnight at 4 °C in a humidified chamber. Cells were washed with PBST and incubated with a DyLight 594-conjugated secondary antibody (red) in PBS at room temperature in the dark. DAPI was used to stain the cell nuclei (blue).

Please note: All products are 'FOR RESEARCH USE ONLY. NOT FOR USE IN DIAGNOSTIC OR THERAPEUTIC PROCEDURES'.