

Anti-CD66c Antibody

Catalog # AP53806

Product Information

Application	WB
Primary Accession	P40199
Reactivity	Human, Mouse, Rat
Host	Rabbit
Clonality	Polyclonal
Calculated MW	37237

Additional Information

Gene ID	4680
Other Names	NCA; Carcinoembryonic antigen-related cell adhesion molecule 6; Non-specific crossreacting antigen; Normal cross-reacting antigen; CD66c
Target/Specificity	Recognizes endogenous levels of CD66c protein.
Dilution	WB~~1/500 - 1/1000
Format	Liquid in 0.42% Potassium phosphate, 0.87% Sodium chloride, pH 7.3, 30% glycerol, and 0.09% (W/V) sodium azide.
Storage	Store at -20 °C.Stable for 12 months from date of receipt

Protein Information

Name	CEACAM6 (HGNC:1818)
Function	Cell surface glycoprotein that plays a role in cell adhesion and tumor progression (PubMed: 10910050 , PubMed: 11590190 , PubMed: 1378450 , PubMed: 16204051 , PubMed: 2022629 , PubMed: 2803308 , PubMed: 8776764). Intercellular adhesion occurs in a calcium- and fibronectin-independent manner (PubMed: 16204051 , PubMed: 2022629). Mediates homophilic and heterophilic cell adhesion with other carcinoembryonic antigen-related cell adhesion molecules, such as CEACAM5 and CEACAM8 (PubMed: 11590190 , PubMed: 16204051 , PubMed: 2022629 , PubMed: 2803308 , PubMed: 8776764). Heterophilic interaction with CEACAM8 occurs in activated neutrophils (PubMed: 8776764). Plays a role in neutrophil adhesion to cytokine-activated endothelial cells (PubMed: 1378450). Plays a role in cell migration and cell adhesion to endothelial cells (PubMed: 16204051).
Cellular Location	Cell membrane; Lipid-anchor, GPI-anchor. Apical cell membrane. Cell surface. Note=Localized to the apical glycocalyx surface.

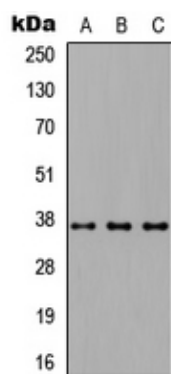
Tissue Location

Expressed in neutrophils (PubMed:1378450). Expressed in columnar epithelial and goblet cells of the colon (PubMed:10436421). Expressed in numerous tumor cell lines (at protein level) (PubMed:16204051).

Background

Rabbit polyclonal antibody to CD66c

Images



Western blot analysis of CD66c expression in HEK293T (A), NS-1 (B), PC12 (C) whole cell lysates.

Please note: All products are 'FOR RESEARCH USE ONLY. NOT FOR USE IN DIAGNOSTIC OR THERAPEUTIC PROCEDURES'.