

Anti-DMRTA1 Antibody

Catalog # AP53810

Product Information

Application	WB
Primary Accession	Q5VZB9
Reactivity	Human, Mouse, Rat
Host	Rabbit
Clonality	Polyclonal
Calculated MW	53125

Additional Information

Gene ID	63951
Other Names	DMO; Doublesex- and mab-3-related transcription factor A1
Target/Specificity	KLH-conjugated synthetic peptide encompassing a sequence within the center region of human DMRTA1. The exact sequence is proprietary.
Dilution	WB~~1/500 - 1/1000
Format	Liquid in 0.42% Potassium phosphate, 0.87% Sodium chloride, pH 7.3, 30% glycerol, and 0.09% (W/V) sodium azide.
Storage	Store at -20 °C.Stable for 12 months from date of receipt

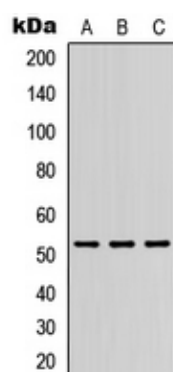
Protein Information

Name	DMRTA1
Synonyms	DMO
Cellular Location	Nucleus {ECO:0000255 PROSITE-ProRule:PRU00070}.
Tissue Location	Expressed in liver, kidney, pancreas, prostate and weakly detected in testis and ovary.

Background

Rabbit polyclonal antibody to DMRTA1

Images



Western blot analysis of DMRTA1 expression in HEK293T (A), Raw264.7 (B), PC12 (C) whole cell lysates.

Please note: All products are 'FOR RESEARCH USE ONLY. NOT FOR USE IN DIAGNOSTIC OR THERAPEUTIC PROCEDURES'.