

Anti-LPHN2 Antibody

Catalog # AP53822

Product Information

Application	WB
Primary Accession	O95490
Reactivity	Human, Mouse, Rat
Host	Rabbit
Clonality	Polyclonal
Calculated MW	163349

Additional Information

Gene ID	23266
Other Names	KIAA0786; LEC1; LPHH1; Latrophilin-2; Calcium-independent alpha-latrotoxin receptor 2; CIRL-2; Latrophilin homolog 1; Lectomedin-1
Target/Specificity	Recognizes endogenous levels of LPHN2 protein.
Dilution	WB~~1/500 - 1/1000
Format	Liquid in 0.42% Potassium phosphate, 0.87% Sodium chloride, pH 7.3, 30% glycerol, and 0.09% (W/V) sodium azide.
Storage	Store at -20 °C.Stable for 12 months from date of receipt

Protein Information

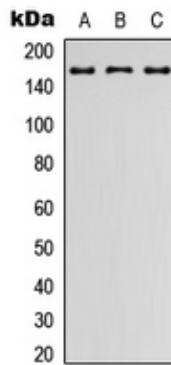
Name	ADGRL2 (HGNC:18582)
Function	Orphan adhesion G-protein coupled receptor (aGPCR), which mediates synapse specificity (By similarity). Ligand binding causes a conformation change that triggers signaling via guanine nucleotide- binding proteins (G proteins) and modulates the activity of downstream effectors (By similarity). Following G-protein coupled receptor activation, associates with cell adhesion molecules that are expressed at the surface of adjacent cells to direct synapse specificity. Specifically mediates the establishment of perforant-path synapses on CA1-region pyramidal neurons in the hippocampus. Localizes to postsynaptic spines in excitatory synapses in the S.lacunosum- moleculare and interacts with presynaptic cell adhesion molecules, such as teneurins, promoting synapse formation (By similarity).
Cellular Location	Postsynaptic cell membrane {ECO:0000250 UniProtKB:Q8JZZ7}; Multi-pass membrane protein
Tissue Location	Expressed very widely in all normal tissues tested. Expression is variable in

tumor cell lines, apparently elevated in some lines and absent or markedly reduced in others

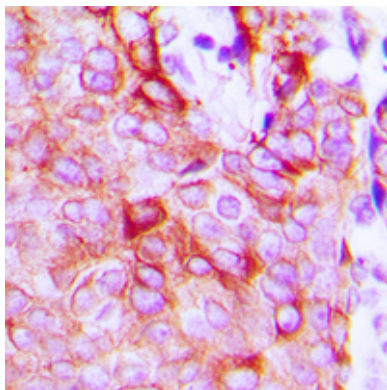
Background

Rabbit polyclonal antibody to LPHN2

Images



Western blot analysis of LPHN2 expression in HEK293T (A), Raw264.7 (B), PC12 (C) whole cell lysates.



Immunohistochemical analysis of LPHN2 staining in human breast cancer formalin fixed paraffin embedded tissue section. The section was pre-treated using heat mediated antigen retrieval with sodium citrate buffer (pH 6.0). The section was then incubated with the antibody at room temperature and detected using an HRP conjugated compact polymer system. DAB was used as the chromogen. The section was then counterstained with haematoxylin and mounted with DPX.

Please note: All products are 'FOR RESEARCH USE ONLY. NOT FOR USE IN DIAGNOSTIC OR THERAPEUTIC PROCEDURES'.