

# Anti-MAS1L Antibody

Catalog # AP53824

## Product Information

---

Application	WB
Primary Accession	<a href="#">P35410</a>
Reactivity	Human, Mouse, Rat
Host	Rabbit
Clonality	Polyclonal
Calculated MW	42411

## Additional Information

---

Gene ID	116511
Other Names	MRG; Mas-related G-protein coupled receptor MRG; MAS-R; MAS1-like
Target/Specificity	Recognizes endogenous levels of MAS1L protein.
Dilution	WB~~1/500 - 1/1000
Format	Liquid in 0.42% Potassium phosphate, 0.87% Sodium chloride, pH 7.3, 30% glycerol, and 0.09% (W/V) sodium azide.
Storage	Store at -20 °C.Stable for 12 months from date of receipt

## Protein Information

---

Name	MAS1L
Synonyms	MRG
Cellular Location	Cell membrane; Multi-pass membrane protein.

## Background

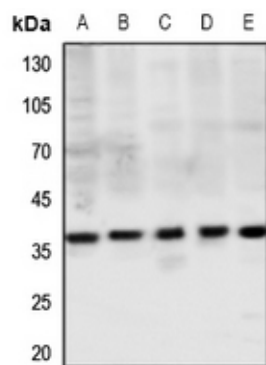
---

Rabbit polyclonal antibody to MAS1L

## Images

---

Western blot analysis of MAS1L expression in Hela (A), H446 (B), mouse lung (C), mouse testis (D), rat lung (E) whole cell lysates.



Please note: All products are 'FOR RESEARCH USE ONLY. NOT FOR USE IN DIAGNOSTIC OR THERAPEUTIC PROCEDURES'.