

# Anti-MFG-E8 Antibody

Catalog # AP53825

## Product Information

---

Application	WB
Primary Accession	<a href="#">Q08431</a>
Reactivity	Human, Mouse, Rat
Host	Rabbit
Clonality	Polyclonal
Calculated MW	43105

## Additional Information

---

Gene ID	4240
Other Names	Lactadherin; Breast epithelial antigen BA46; HMFG; MFGM; Milk fat globule-EGF factor 8; MFG-E8; SED1
Target/Specificity	Recognizes endogenous levels of MFG-E8 protein.
Dilution	WB~~1/500 - 1/1000
Format	Liquid in 0.42% Potassium phosphate, 0.87% Sodium chloride, pH 7.3, 30% glycerol, and 0.09% (W/V) sodium azide.
Storage	Store at -20 °C.Stable for 12 months from date of receipt

## Protein Information

---

Name	MFGE8
Function	Plays an important role in the maintenance of intestinal epithelial homeostasis and the promotion of mucosal healing. Promotes VEGF-dependent neovascularization (By similarity). Contributes to phagocytic removal of apoptotic cells in many tissues. Specific ligand for the alpha-v/beta-3 and alpha-v/beta-5 receptors. Also binds to phosphatidylserine-enriched cell surfaces in a receptor-independent manner. Zona pellucida-binding protein which may play a role in gamete interaction.
Cellular Location	Membrane; Peripheral membrane protein. Secreted. Cytoplasmic vesicle, secretory vesicle, acrosome membrane {ECO:0000250 UniProtKB:P79385}; Peripheral membrane protein {ECO:0000250 UniProtKB:P79385}. Note=Located in the acrosomal region of zona-pellucida bound sperm. {ECO:0000250 UniProtKB:P79385}
Tissue Location	Mammary epithelial cell surfaces and aortic media. Overexpressed in several carcinomas

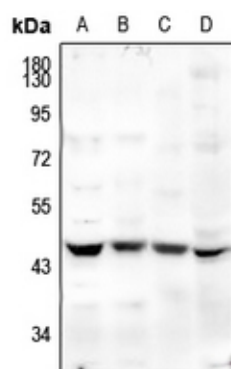
## Background

---

Rabbit polyclonal antibody to MFG-E8

## Images

---



Western blot analysis of MFG-E8 expression in MCF7 (A), SKOVCA3 (B), rat kidney (C), mouse lung (D) whole cell lysates.

Please note: All products are 'FOR RESEARCH USE ONLY. NOT FOR USE IN DIAGNOSTIC OR THERAPEUTIC PROCEDURES'.