

# Anti-RNASE4 Antibody

Catalog # AP53829

## Product Information

---

<b>Application</b>	WB
<b>Primary Accession</b>	<a href="#">P34096</a>
<b>Reactivity</b>	Human, Mouse, Rat
<b>Host</b>	Rabbit
<b>Clonality</b>	Polyclonal
<b>Calculated MW</b>	16840

## Additional Information

---

<b>Gene ID</b>	6038
<b>Other Names</b>	RNS4; Ribonuclease 4; RNase 4
<b>Target/Specificity</b>	Recognizes endogenous levels of RNASE4 protein.
<b>Dilution</b>	WB~~1/500 - 1/1000
<b>Format</b>	Liquid in 0.42% Potassium phosphate, 0.87% Sodium chloride, pH 7.3, 30% glycerol, and 0.09% (W/V) sodium azide.
<b>Storage</b>	Store at -20 °C.Stable for 12 months from date of receipt

## Protein Information

---

<b>Name</b>	RNASE4
<b>Synonyms</b>	RNS4
<b>Function</b>	Cleaves preferentially after uridine bases (PubMed: <a href="#">3467790</a> ). Has antimicrobial activity against uropathogenic E.coli (UPEC) (PubMed: <a href="#">33818125</a> ). Probably contributes to urinary tract sterility (PubMed: <a href="#">33818125</a> ).
<b>Cellular Location</b>	Secreted. Note=Detected in urine.
<b>Tissue Location</b>	Expressed in the cortical and medullary tubules of the kidney, and in the transitional epithelium of the urinary bladder (at protein level).

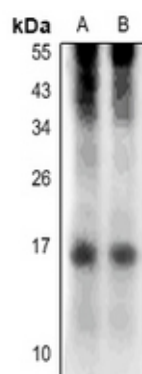
## Background

---

Rabbit polyclonal antibody to RNASE4

## Images

---



Western blot analysis of RNASE4 expression in PC12 (A), AML12 (B) whole cell lysates.

Please note: All products are 'FOR RESEARCH USE ONLY. NOT FOR USE IN DIAGNOSTIC OR THERAPEUTIC PROCEDURES'.