

# Anti-SCNM1 Antibody

Catalog # AP53833

## Product Information

---

<b>Application</b>	WB
<b>Primary Accession</b>	<a href="#">Q9BWG6</a>
<b>Reactivity</b>	Human, Mouse, Rat
<b>Host</b>	Rabbit
<b>Clonality</b>	Polyclonal
<b>Calculated MW</b>	25949

## Additional Information

---

<b>Gene ID</b>	100534012;79005
<b>Other Names</b>	Sodium channel modifier 1
<b>Target/Specificity</b>	Recognizes endogenous levels of SCNM1 protein.
<b>Dilution</b>	WB~~1/500 - 1/1000
<b>Format</b>	Liquid in 0.42% Potassium phosphate, 0.87% Sodium chloride, pH 7.3, 30% glycerol, and 0.09% (W/V) sodium azide.
<b>Storage</b>	Store at -20 °C.Stable for 12 months from date of receipt

## Protein Information

---

<b>Name</b>	SCNM1
<b>Function</b>	As a component of the minor spliceosome, involved in the splicing of U12-type introns in pre-mRNAs (PubMed: <a href="#">36084634</a> ). Plays a role in the regulation of primary cilia length and Hedgehog signaling (PubMed: <a href="#">36084634</a> ).
<b>Cellular Location</b>	Nucleus, nucleoplasm. Nucleus speckle. Note=Colocalizes with LUC7L2 and SNRNP70 in nuclear speckles. {ECO:0000250   UniProtKB:Q8K136}

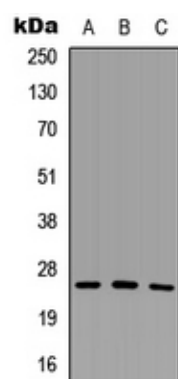
## Background

---

Rabbit polyclonal antibody to SCNM1

## Images

---



Western blot analysis of SCN1M1 expression in HeLa (A), Raw264.7 (B), H9C2 (C) whole cell lysates.

Please note: All products are 'FOR RESEARCH USE ONLY. NOT FOR USE IN DIAGNOSTIC OR THERAPEUTIC PROCEDURES'.