

Anti-SFTPA1 Antibody

Catalog # AP53834

Product Information

Application	WB
Primary Accession	Q8IWL2
Reactivity	Human, Mouse, Rat
Host	Rabbit
Clonality	Polyclonal
Calculated MW	26242

Additional Information

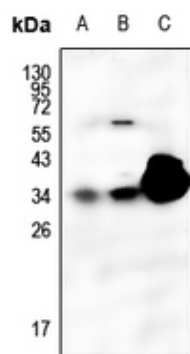
Gene ID	653509
Other Names	COLEC4; PSAP; SFTP1; SFTPA; SFTPA1B; Pulmonary surfactant-associated protein A1; PSP-A; PSPA; SP-A; SP-A1; 35 kDa pulmonary surfactant-associated protein; Alveolar proteinosis protein; Collectin-4
Target/Specificity	KLH-conjugated synthetic peptide encompassing a sequence within the center region of human SFTPA1. The exact sequence is proprietary.
Dilution	WB~~1/500 - 1/1000
Format	Liquid in 0.42% Potassium phosphate, 0.87% Sodium chloride, pH 7.3, 30% glycerol, and 0.09% (W/V) sodium azide.
Storage	Store at -20 °C. Stable for 12 months from date of receipt

Protein Information

Name	SFTPA1
Synonyms	COLEC4, PSAP, SFTP1, SFTPA, SFTPA1B
Function	In presence of calcium ions, it binds to surfactant phospholipids and contributes to lower the surface tension at the air- liquid interface in the alveoli of the mammalian lung and is essential for normal respiration. Enhances the expression of MYO18A/SP-R210 on alveolar macrophages (By similarity).
Cellular Location	Secreted. Secreted, extracellular space, extracellular matrix. Secreted, extracellular space, surface film

Background

Images



Western blot analysis of SFTP1 expression in MCF7 (A), rat lung (B), mouse lung (C) whole cell lysates.

Please note: All products are 'FOR RESEARCH USE ONLY. NOT FOR USE IN DIAGNOSTIC OR THERAPEUTIC PROCEDURES'.