

# Anti-Frizzled 1/2/7 Antibody

Catalog # AP53848

## Product Information

---

Application	WB
Primary Accession	<a href="#">Q9UP38</a>
Other Accession	<a href="#">Q14332</a> , <a href="#">Q75084</a>
Reactivity	Human, Mouse, Rat
Host	Rabbit
Clonality	Polyclonal
Calculated MW	71158

## Additional Information

---

Gene ID	8321
Other Names	Frizzled-7; Fz-7; hFz7; FzE3
Target/Specificity	Recognizes endogenous levels of Frizzled 1/2/7 protein.
Dilution	WB~~1/500 - 1/1000
Format	Liquid in 0.42% Potassium phosphate, 0.87% Sodium chloride, pH 7.3, 30% glycerol, and 0.09% (W/V) sodium azide.
Storage	Store at -20 °C.Stable for 12 months from date of receipt

## Protein Information

---

Name	FZD1
Function	Receptor for Wnt proteins (PubMed: <a href="#">10557084</a> ). Activated by WNT3A, WNT3, WNT1 and to a lesser extent WNT2, but apparently not by WNT4, WNT5A, WNT5B, WNT6, WNT7A or WNT7B (PubMed: <a href="#">10557084</a> ). Contradictory results showing activation by WNT7B have been described for mouse (By similarity). Functions in the canonical Wnt/beta-catenin signaling pathway (PubMed: <a href="#">10557084</a> ). The canonical Wnt/beta-catenin signaling pathway leads to the activation of disheveled proteins, inhibition of GSK-3 kinase, nuclear accumulation of beta-catenin and activation of Wnt target genes (PubMed: <a href="#">10557084</a> ). A second signaling pathway involving PKC and calcium fluxes has been seen for some family members, but it is not yet clear if it represents a distinct pathway or if it can be integrated in the canonical pathway, as PKC seems to be required for Wnt-mediated inactivation of GSK-3 kinase. Both pathways seem to involve interactions with G-proteins. May be involved in transduction and intercellular transmission of polarity information during tissue morphogenesis and/or in differentiated tissues (Probable).

**Cellular Location**

Cell membrane; Multi-pass membrane protein

**Tissue Location**

Expressed in adult heart, placenta, lung, kidney, pancreas, prostate, and ovary and in fetal lung and kidney

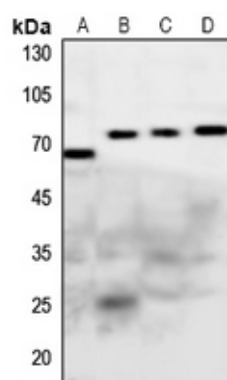
**Background**

---

Rabbit polyclonal antibody to Frizzled 1/2/7

**Images**

---



Western blot analysis of Frizzled 1/2/7 expression in Hela (A), mouse heart (B), rat heart (C), rat kidney (D) whole cell lysates.

Please note: All products are 'FOR RESEARCH USE ONLY. NOT FOR USE IN DIAGNOSTIC OR THERAPEUTIC PROCEDURES'.